

nuna®



trivlx™

Designed
around your life



IMPORTANT!
KEEP THESE
INSTRUCTIONS FOR
FUTURE REFERENCE:
READ CAREFULLY

Contents

Product Information	4
Warranty	
Contact	
Child Usage Requirements	5
Warnings	6
Parts List	10
Product Set Up	12
Product Use	16
Accessories	24
Cleaning and Maintenance	30

Product Information

Model Number: _____

Manufactured Date: _____

The model number and the manufactured in date are located on a label on the stroller frame.

Warranty

Our goods come with guarantees that cannot be excluded under the Australian Consumer Law. You are entitled to a replacement or refund for a major failure and compensation for any other reasonably foreseeable loss or damage. You are also entitled to have the goods repaired or replaced if the goods fail to be of acceptable quality and the failure does not amount to a major failure.

We have purposely designed our high-quality products so that they can grow with both your child and your family. Because we stand by our product, our gear is covered by a custom warranty per product, starting from the day it was purchased. Please have the proof of purchase, model number and manufactured in date available when you contact us.

For warranty information please visit:
www.nunababy.com

Contact

For replacement parts, service, or additional warranty questions, please contact our customer service department.

Distributed by Allison AU Pty. Ltd.

ACN: 642 240 140

Unit 1, 35 Lyn Parade Prestons, NSW Australia 2170

For after-sales & warranty service, contact:

1800 951 070

customerservice@allisonau.com.au

Child Usage Requirements

This stroller is suitable for use with children who meet the following requirements:

Weight: up to 22.7 kg maximum

When using the stroller frame with KLIK plus infant carrier, refer to the child usage requirements listed in the infant carrier instruction manual.

Weight: up to 13 kg maximum

When using the stroller frame with LYTL bassinet, refer to the child usage requirements listed in the bassinet instruction manual.

Weight: up to 9kg maximum

WARNING

**FOLLOW THE MANUFACTURER'S INSTRUCTIONS.
PUT ON ALL THE BRAKES WHENEVER YOU PARK
THE STROLLER.**

DO NOT LEAVE CHILDREN UNATTENDED.

**ALWAYS KEEP CHILD IN VIEW WHILE IN
STROLLER.**

**SECURE THE CHILD IN THE HARNESS AT ALL
TIMES.**

USE THE PROVIDED HARNESS AT ALL TIMES.

**DO NOT CARRY EXTRA CHILDREN OR BAGS ON
THIS STROLLER.**

**MAKE SURE CHILDREN ARE CLEAR OF ANY
MOVING PARTS IF YOU ADJUST THE STROLLER.
OTHERWISE THEY MAY BE INJURED.**

**TO AVOID SERIOUS INJURY FROM FALLING OR
SLIDING OUT, ALWAYS USE SEAT BELT.**

**USE THIS TETHER STRAP TO STOP THE STROLLER
ROLLING AWAY.**

**DO NOT USE THIS BASSINET ONCE THE CHILD
CAN SIT UP UNAIDED.**

DO NOT USE FOR UNSUPERVISED SLEEPING.

**Ensure that all the locking devices are engaged
before use.**

Magnetic Harness Buckle: The buckle and buckle clips contain magnets. If your child has a medical condition that prohibits the use of magnets near the child, do not use the stroller. Contact Nuna to discuss a solution.

**Be mindful of the possible interaction of magnets in
buckles and certain electronic devices.**

Do not let your child play with this product.

Never leave the harness buckled when not fitted to a child in the stroller because the harness can form loops which may pose a strangulation hazard.

The use of accessories not approved by the vehicle manufacturer is unsafe.

Adult assembly required.

Use of this stroller with a child weighing more than 22.7 kg will cause excessive wear, and stress on the stroller, and could create an unstable condition. Use the stroller with only one child at a time.

To prevent a hazardous, unstable condition, do not place more than 4.5 kg in the storage basket before use.

Overloading, folding incorrectly, or using component parts from other manufacturers may cause the stroller to be damaged, broken or unsafe. Please read the instruction manual carefully.

Please read all the instructions in the manual before using the product. Please save instruction manual for future use. Failure to follow these warnings and instructions may result in serious injury or death.

Safety belts and restraint system must be used correctly.

Child may slip into leg openings and be strangled if the harness is not used.

Never use stroller on stairs or escalators.

The stroller is not to be used near an open fire or exposed flame.

Never allow your child to stand on the stroller or sit in the stroller with head toward front of stroller.

Never place the stroller on roads or dangerous area.

The vehicle is designed for use on flat or gently sloping surfaces and may be unstable on higher sloping and uneven surfaces, resulting in the possibility of the vehicle tipping over.

Do make sure all parts are assembled and fastened properly before using the stroller.

To avoid strangulation, do not place items with a string around your child's neck, suspend strings from this product, or attach strings to toys.

To prevent tipping, do not put anything on the handle. Always lift the child in and out of the stroller.

Do not lift stroller while child is in stroller.

Do not use storage basket as a child carrier.

To prevent tipping, never let child climb the stroller.

To avoid finger entrapment or injury to the body, use care when folding and unfolding the stroller.

Be sure the stroller is fully open or folded before allowing child near the stroller.

Check that the infant child restraint attachment device is correctly engaged before use.

To avoid strangulation, do make sure your child is clear from the canopy.

Discontinue using your stroller if it is damaged or broken.

Stroller to be used only at walking speed. This product is not intended for use while jogging.

To avoid suffocation, remove plastic bag and packaging materials before using this product. The plastic bag and packaging materials should then be kept away from babies and children.

This product is not suitable for running or skating.

Stroller designed to be used from birth shall recommend the use of the most reclined position for new born babies.

The parking device must be engaged when placing and removing children.

Please ensure that the storage latch has been properly locked, before lifting or moving the vehicle.

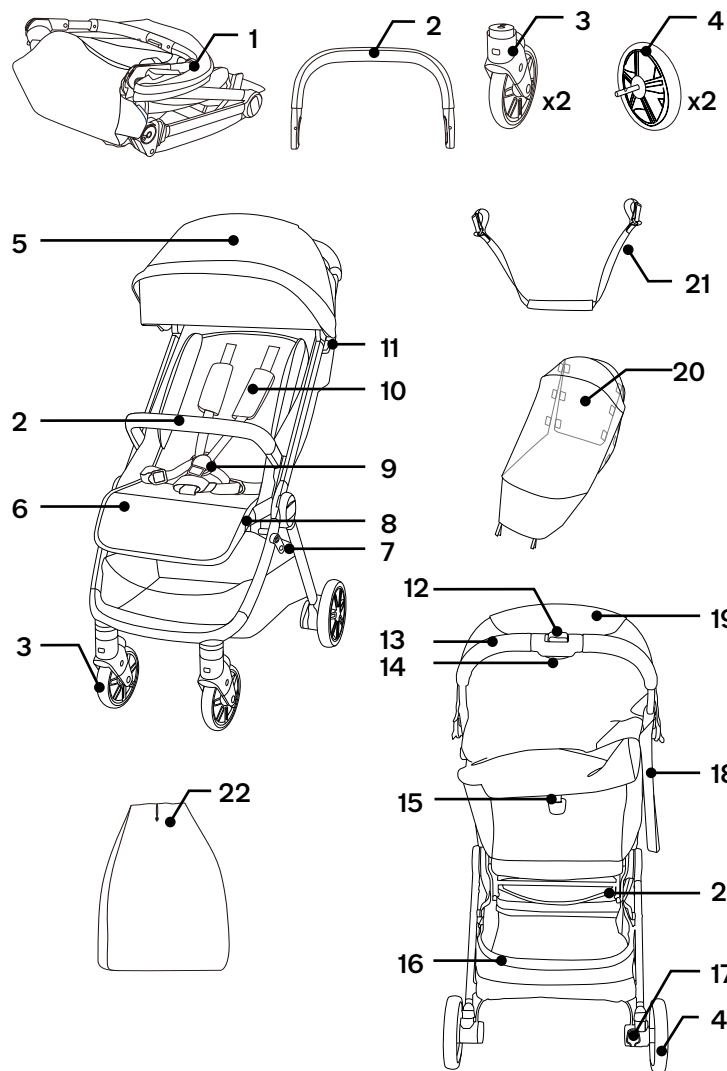
The vehicle is not to be used as an unsupervised sleeping environment.

Parts List

Make sure all parts are available before assembly.
If any part is missing, please contact local retailer. No tools are required for assembly.

! CHOKING HAZARD: Remove and immediately discard protective end caps from each wheel and wheel hub axle.

- | | |
|----------------------------------|------------------------------|
| 1 Stroller Frame | 12 Secondary Lock |
| 2 Armbar | 13 Handle |
| 3 Front Wheel (x2) | 14 One-Hand-Fold Button |
| 4 Rear Wheel (x2) | 15 Recline Adjustment Puller |
| 5 Canopy | 16 Storage Basket |
| 6 Calf Support | 17 Rear Brake Lever |
| 7 Storage Latch | 18 Tether Strap |
| 8 Calf Support Adjustment Button | 19 Canopy Window |
| 9 Buckle | 20 Rain Cover |
| 10 Shoulder Harness Pads | 21 Carrying Strap |
| 11 Infant Carrier Lock | 22 Carry Bag |



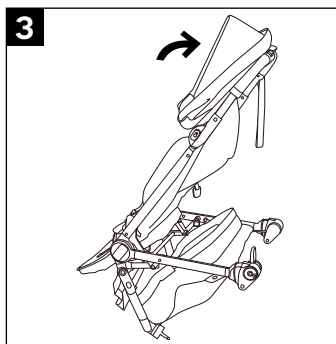
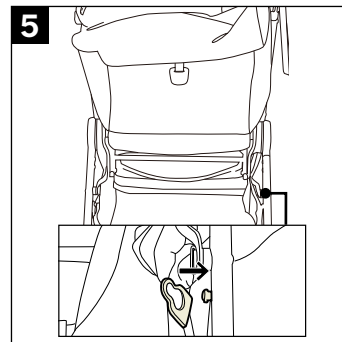
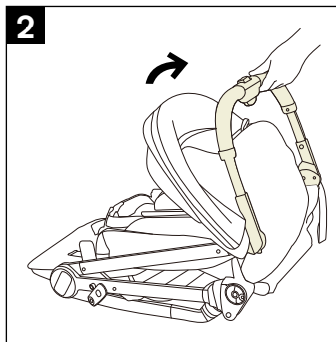
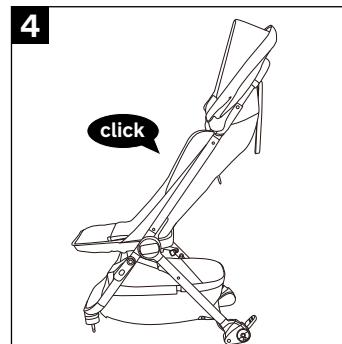
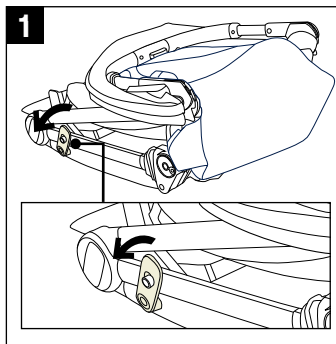
Product Set Up

Open Stroller

- 1 - Take the stroller frame out. And then open the storage latch.
 - 2 - Rotate the stroller handle up.
 - 3 - Open the stroller frame .
 - 4 - A “click” sound means the stroller frame is open completely.
- ! Check that the stroller is completely latched open before continuing.

Storage Basket

- 5 - Hook the storage basket on the rear legs on the both sides.



Rear Wheels

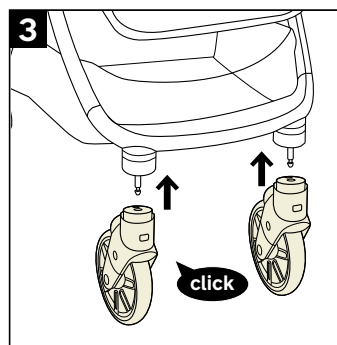
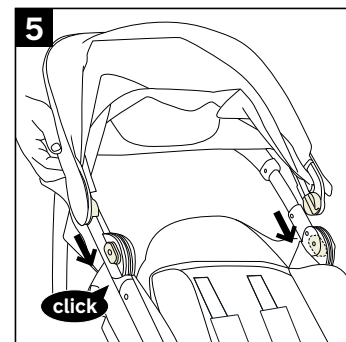
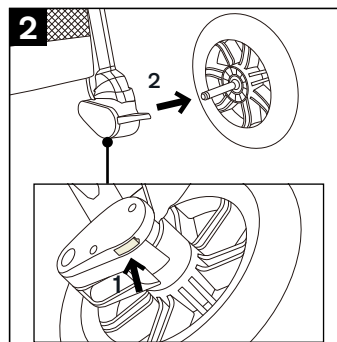
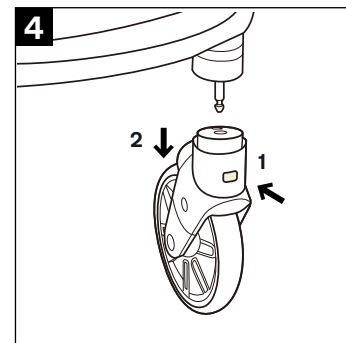
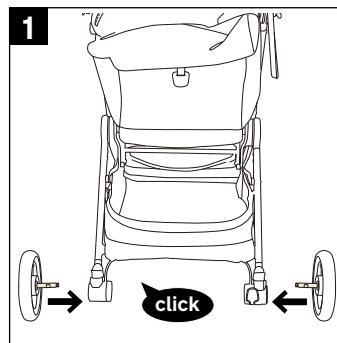
- 1 - Insert the rear wheel into the rear leg. A “click” sound means the rear wheel is assembled completely.
! Check that the wheels are securely attached by pulling on them.
- 2 - To remove the rear wheel, press the release button (1) and detach the rear wheel from the rear leg (2).

Front Wheels

- 3 - Insert the front wheel into the front leg. A “click” sound means the wheel is assembled completely.
! Check that the wheels are securely attached by pulling out.
- 4 - To remove the front wheel, press the release button (1) and then detach the front wheel from the front leg (2).

Canopy

- 5 - Slide the canopy mounts onto the stroller. A “click” sound means the canopy is assembled completely.
! Before using the stroller, peel off the protective film covering the BMW logo button located on the rear canopy panel.



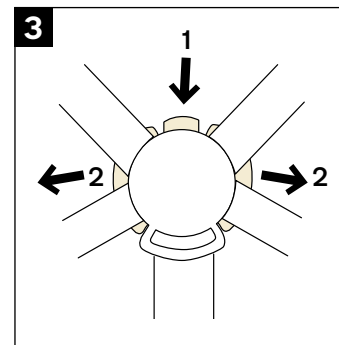
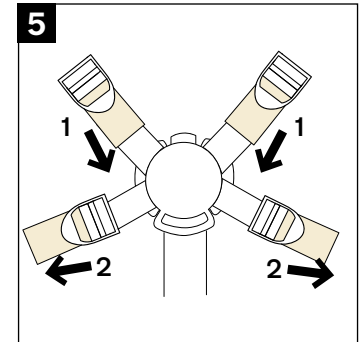
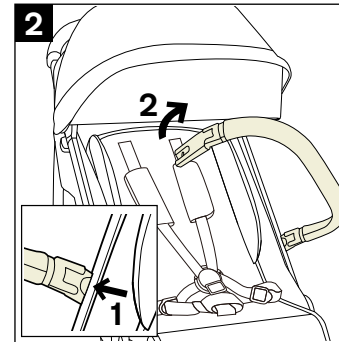
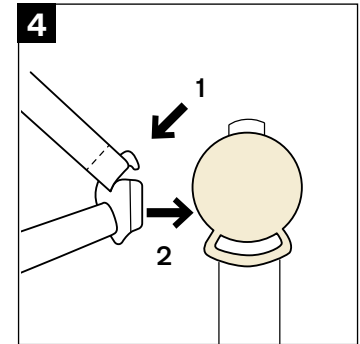
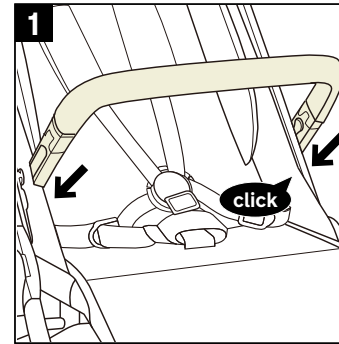
Arm Bar

- 1 - Align the armbar ends with the armbar mounts, and insert until it clicks into place. A “click” sound means the armbar is assembled completely.
- 2 - Press armbar release button (1), and then pull up the armbar (2).

Product Use

Securing Your Child

- ! The parking brake **MUST** be engaged when the stroller is stopped and when placing and removing child.
 - ! To avoid serious injury from falling or sliding out, always secure your child with the harness. Make sure the harness is adjusted properly and your child is snugly secured. The space between the child and the shoulder harness should be about the thickness of one finger. **DO NOT** cross the shoulder belts. This will cause pressure on your child’s neck.
- 3 - Push the top button on the buckle (1) to release the buckle latch and remove the magnetic clips (2). Place your child in the stroller.
 - 4 - Attach the shoulder harness strap to the magnetic clip (1), then insert into the buckle (2). Repeat on the opposite side.
- ! **CHECK** the magnetic clips are securely locked in the main buckle by pulling on the straps.
- 5 - Fit the harness snugly to your child by pulling the adjustment straps to tighten (1). Then pull the waist adjustment straps out (2).



Shoulder Harness Position

- 1 - The upper shoulder harness buckles can be moved up and down for added adjustment.

Canopy

- 2 - Open the zipper on the canopy for extra shade (1).
For added ventilation, flip the canopy window cover up (2).
- 3 - For added air flow, unzip the back zipper to expose the mesh.

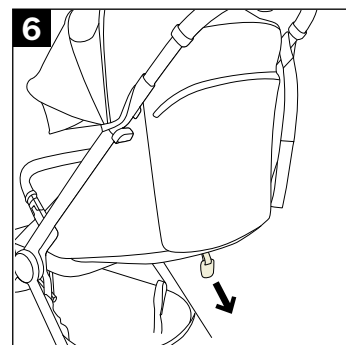
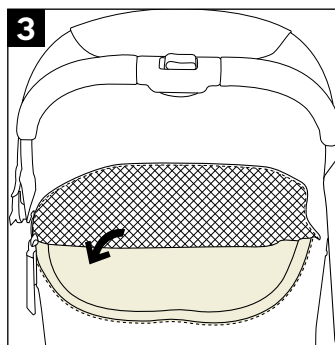
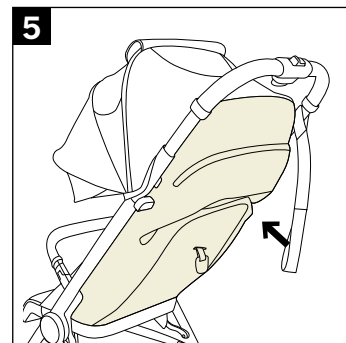
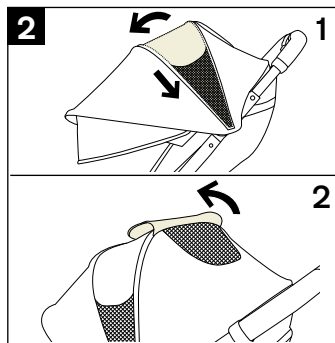
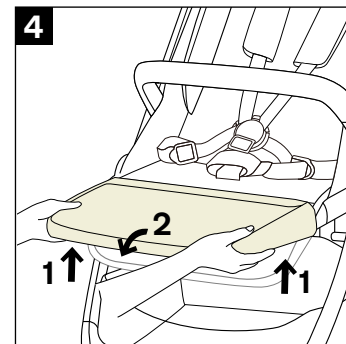
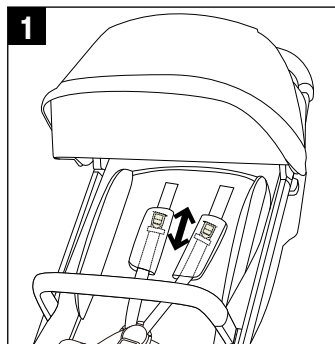
Calf Support

The calf support has 2 positions.

- 4 - To raise the calf support, lift up. To lower the calf support, press the adjustment button in the middle of the calf support (1) and push down (2).

Recline

- 5 - To raise the recline, push the backrest up.
- 6 - To recline the backrest, pull the backrest adjustment puller down.



Use Tether Strap

- 1 - Use the tether strap to prevent the stroller inadvertently rolling away. Check that when your hand is through the loop, it allows you to easily control the stroller.

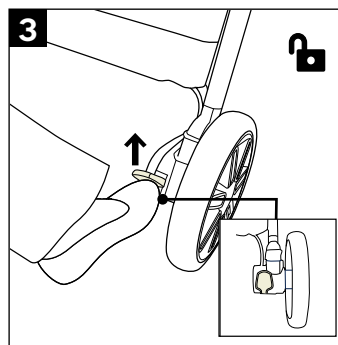
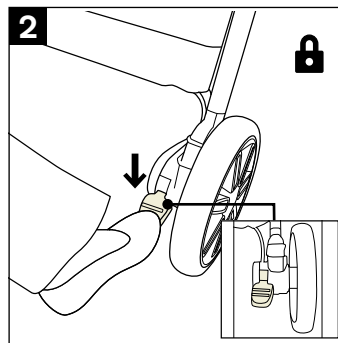
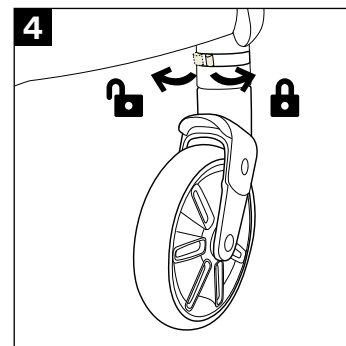
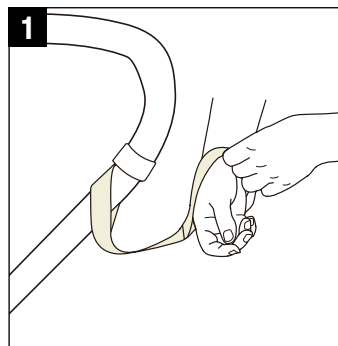
Brake

- 2 - To lock the rear wheels, step down on the brake lever.
- 3 - To release wheels, just lift the brake lever upwards.

Front Swivel Locks

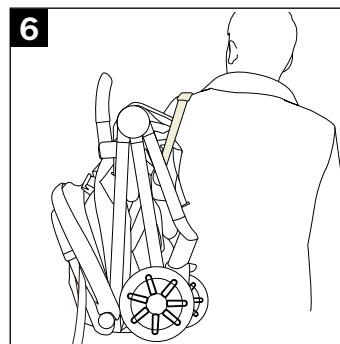
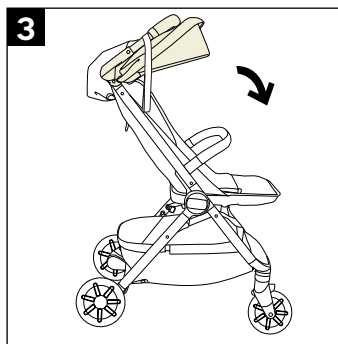
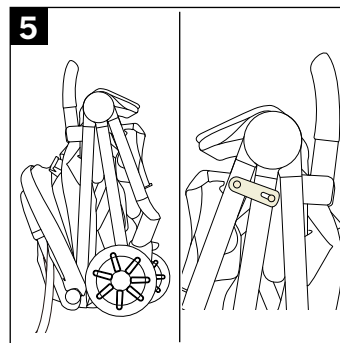
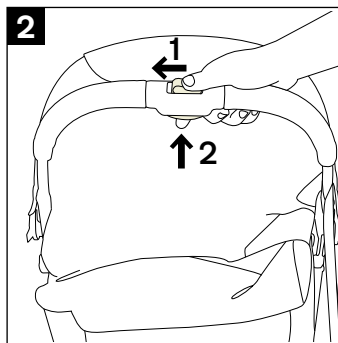
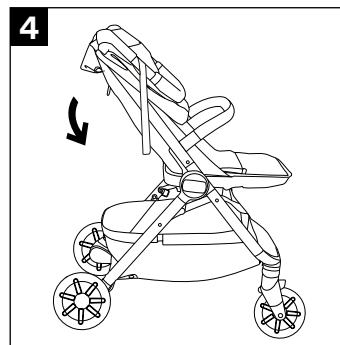
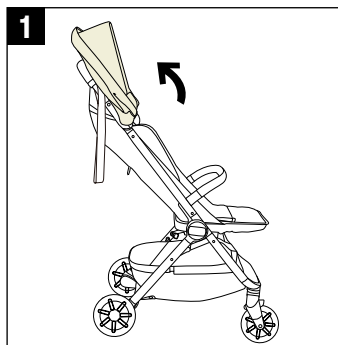
It is recommended to use the front swivel locks on uneven surfaces.

- 4 - Front wheel locked or unlocked status as show.



Fold

- 1 - Fold the canopy.
- 2 - Slide the secondary lock and then squeeze the folding button.
- 3 - While squeezing the folding button, fold the handle down.
- 4 - Fold the top of the stroller down.
- 5 - The frame can fold and stand on its own and then rotate the storage latch.
- 6 - You can carry the stroller with the strap.



Accessories

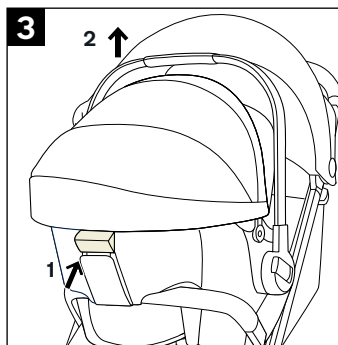
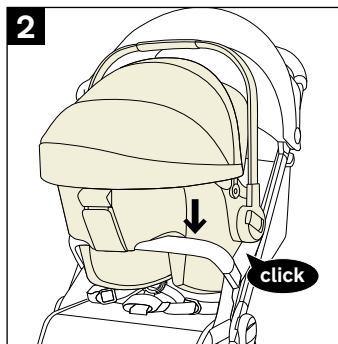
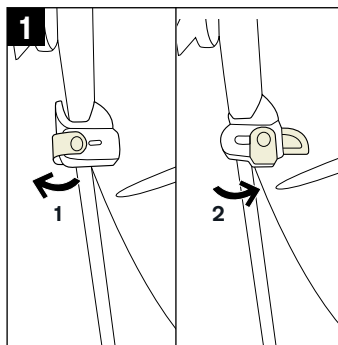
Not all accessories are included on some models.

KLIK plus infant carrier

For KLIK plus infant carrier assembly and usage, please refer to the infant carrier instruction manual.

Before using with infant carrier, Adjust the backrest to the lowest position and fold the canopy.

- 1** - To open the infant carrier lock, slide the latch out **(1)**. To close the infant carrier lock, slide the latch in **(2)**.
- 2** - Place the infant carrier on the stroller so it sits over the arm bar. Then close the infant carrier lock.
- 3** - To remove the infant carrier, open the infant carrier lock, squeeze the release handle **(1)** and lift the infant carrier up **(2)**.



LYTL bassinet

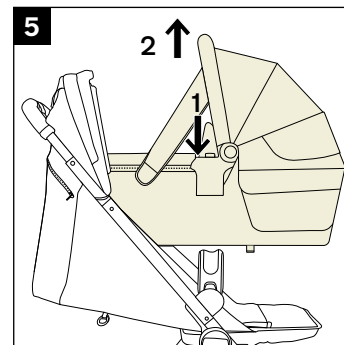
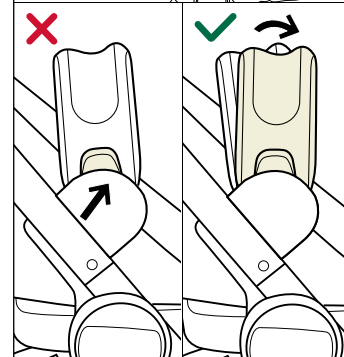
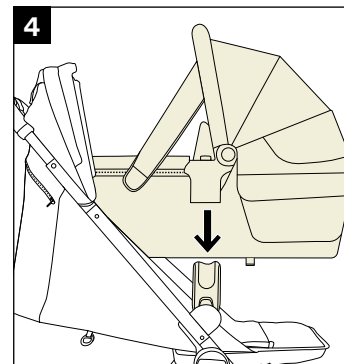
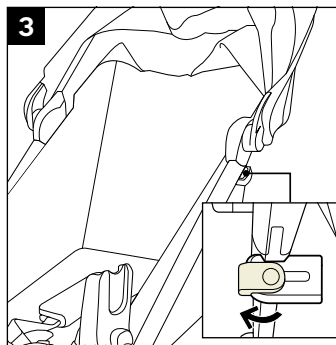
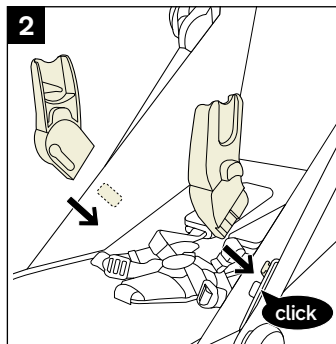
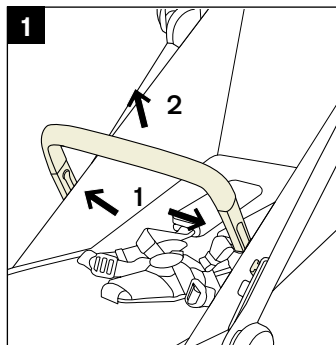
For LYTL bassinet assembly and usage, please refer to the bassinet instruction manual.

Before you start, to convert your stroller to pram mode you will need the TRVL lx adapters with the LYTL bassinet.

- 1** - To remove the armbar, press the armbar release buttons **(1)**, and lift the armbar up **(2)**.
- 2** - To attach the adapters, place the post adapters on the seat mounts. A “click” sound means the adapters are attached.
- 3** - To open the infant carrier lock, slide the latch out.
- 4** - To attach bassinet, place the bassinet on the post adapters. A “click” sound means the bassinet is attached. Make sure the backrest is fully reclined.

Adjust post adapter angle to the correct position. Adjust by pressing the adjustment bottom and rotate.

- 5** - To remove the bassinet, press the release buttons on the side of the bassinet **(1)** and lift up **(2)**. Remove the bassinet before folding.



Rain Cover

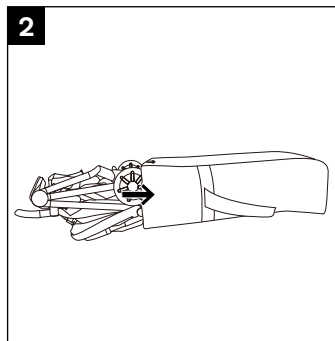
Check that the canopy is completely open before attaching the rain cover.

1 - To assemble the rain cover, place it over the stroller.

- ! Always check ventilation, especially in hot weather when the rain cover is on the product.
- ! Always check that the rain cover has been cleaned and dried before folding.
- ! DO NOT fold the stroller after assembling the rain cover.
- ! DO NOT place your child into the stroller assembled with rain cover during hot weather.

Carry Bag

2 - Put the folded stroller into the carry bag and close the bag using the drawstring.



Cleaning and Maintenance

Clean the frame, plastic parts, and fabric with a damp cloth, but do not use abrasives or bleach. Do not use silicon lubricants as they will attract dirt and grime. Do not store your stroller in a damp place.

Clean the stroller wheels regularly with water and remove any dirt.

To ensure long-lasting use, wipe the stroller off with a soft, absorbent cloth after using it in rainy weather.

Refer to the care label attached to the soft goods for washing and drying instructions.

It is normal for fabric to color from sunlight and to show wear and tear after a long period of use, even when used normally.

For reasons of safety, only use original Nuna parts.

Check regularly if everything functions properly. If any parts are torn, broken, or missing, stop using this product.



Find out more at nunababy.com

The BMW logo and the BMW wordmark are trademarks of BMW AG and are used under license.