

nuna®



trvl™ cup holder



Thank you!

You've just purchased a Nuna product, and you can be sure that your child is getting the best there is. Our products are expertly engineered for safety, with luxury fabrics and sophisticated style. Whatever made you fall in love with Nuna, rest assured your adventures with your little one will be easier from now on, freeing you to enjoy more happy family moments together.



**IMPORTANT!
KEEP THESE
INSTRUCTIONS
FOR FUTURE
REFERENCE:
*READ CAREFULLY***

Contents

Product Information

Warranty 4

Contact 4

Warnings 5

Cleaning 5

Product Use 6

繁中 8

Product Information

Warranty

We have purposely designed our high-quality products so that they can grow with both your child and your family. Because we stand by our product, our gear is covered by a custom warranty per product, starting from the day it was purchased. Please have the proof of purchase, model number and manufactured in date available when you contact us.

For warranty information please visit:

www.nunababy.com/warranty

Contact

For replacement parts, service, or additional warranty questions, please contact our customer service department.

In the USA:

infoUSA@nunababy.com

www.nunababy.com

1.855.NUNA.USA (1.855.686.2872)

WARNING

Failure to follow these warnings, instructions and labels on the product could result in serious injury or death.

A child's safety is your responsibility. **NEVER** leave your child unattended.

Only use the cup holder with Nuna TRVL strollers.

To prevent a hazardous, unstable condition, **DO NOT** place more than 1 lb (0.5 kg) in the cup holder.

To prevent spills, **NEVER** use the cup holder for carrying a lidless container.

ALWAYS wash the cup holder before/after each use (see Cleaning).

DO NOT use the cup holder for hot beverages.

Cleaning

The cup holder is dishwasher safe on the top rack, or wash with lukewarm water and a mild dish soap. Rinse, then drip or towel dry.

Product Use

For stroller assembly and usage, please refer to the stroller instruction manual.

Before attaching the cup holder, ensure the parking brake is engaged on the stroller.

1 - The cup holder should be attached to the stroller handle at approximately the location circled—just below the leatherette pushbar.

2 - To attach the cup holder, secure the right side of the cup holder clamp around the stroller handle.

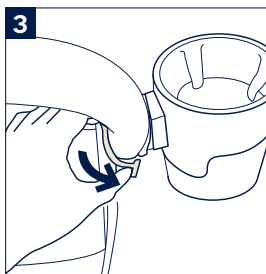
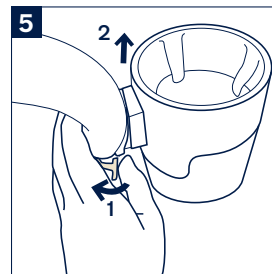
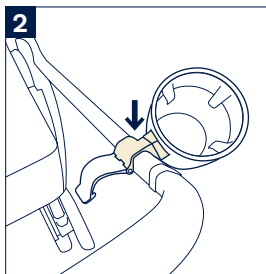
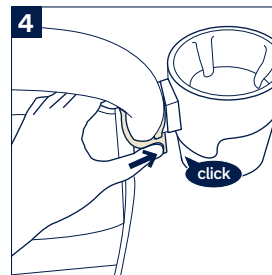
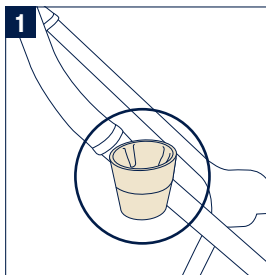
3 - Rotate the left side of the clamp over the handle.

4 - Push the two pieces of the clamp together and listen for a “click.”

A click sound means the cup holder is securely attached.

5 - To remove the cup holder, push apart the two pieces of the clamp **(1)** and remove the cup holder from the handle **(2)**.

⚠ Remove the cup holder before folding the stroller.



Nuna Baby Essentials, Inc. Nuna and all associated logos are trademarks.

請妥善保存本說明書

以備不時之需!

使用產品前請仔細閱讀本說明書，並妥善保存說明書以便日後參考。

目錄

產品資訊	10
保固條件	
聯絡我們	
警告	11
維修與保養	11
產品使用	12

產品資訊

保固條件

保固始於產品購買日，我們提供維修服務，但不提供產品退換。保固期限不會因零件更換或維修而延長。Nuna有權利針對產品進行改善設計，此前製造的產品則無更換義務。

相關保固資訊，詳見官網：

www.nunababy.com/tw/warranty

聯絡我們

我們期望不斷改進並開發新的產品，請隨時告知您對Nuna產品的意見和建議。

taiwanservice@nunababy.com

www.nunababy.com/tw

警告

重要：請務必依照產品說明書和警告以避免導致嚴重傷害甚至是死亡事件發生。

- ！ 嬰幼兒的安全是您的責任。
- ！ 不得將嬰幼兒單獨留置車上無人看護。
- ！ 僅Nuna TRVL嬰兒車使用此置物杯。
- ！ 為防止危險和不穩定狀況，不要在置物杯內放置超過0.5kg的物體。
- ！ 為防止灑出，不得用置物杯攜帶無蓋的容器。
- ！ 每次使用前後都要清洗置物杯（見維修與保養）。
- ！ 不要使用置物杯盛放熱飲料。

維修與保養

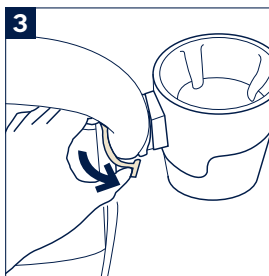
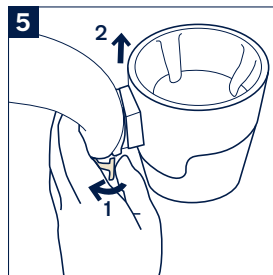
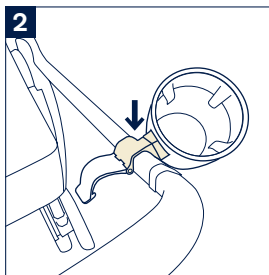
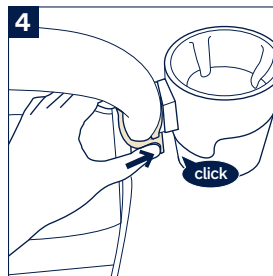
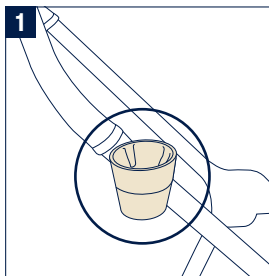
可放洗碗機上層清洗，或可以用溫水和中性肥皂手工沖洗，然後晾乾或用毛巾擦乾。

產品使用

嬰兒車的組裝和使用，請參考嬰兒車說明書。

組裝置物杯前，請確保嬰兒車已剎車。

- 1 - 置物杯要連接在嬰兒車車手圓弧位置，位於皮革手把下方(1)
 - 2 - 將置物杯固定裝置固定到嬰兒車車手上(2)
 - 3 - 旋轉固定裝置到車手上(3)
 - 4 - 扣合固定裝置(4)，聽到“咔嚓”聲表明置物杯已連接穩固。
 - 5 - 拆除置物杯，將固定裝置打開(5)-1，然後將置物杯從車手上移除(5)-2
- ! 收合嬰兒車前請移除置物杯。



NUNA International B.V. NUNA及所有相關徽標皆為商標

