



execTM next

Care Instructions

*IMPORTANT! KEEP THESE
INSTRUCTIONS IN A
SAFE PLACE THAT IS
ACCESSIBLE AND AVAILABLE
FOR QUICK REFERENCE.
READ CAREFULLY*



nuna[®]

Contents

Accessory Care	2
Cleaning the Seat Cover, Slip Cover, Harness Pads	2
SIP Insert and Pads	2
Infant Insert and Wedge	2
Seat Cover Removal	4
Checklist Before Removing Seat Cover	4
Remove Head Support Cover	4
Remove Cover from Leg Rest	6
Remove Cover from Child Restraint	8
Clean Harness Adjuster	10
Harness Function Test	10
To Access Harness Adjuster	10
To Clean Harness Adjuster	12
Seat Cover Assembly	14
Assembly Checklist	14
Additional Care	15
Cleaning the Harness	15
Cleaning the Shell	15
Cleaning the Buckle	15



WARNING: Do not attempt to disassemble the child restraint. Only perform steps shown in this manual.

Accessory Care

⚠ WARNING: Do not attempt to disassemble the child restraint. Only perform steps shown in this manual.

Cleaning the Seat Cover, Slip Cover, Harness Pads

Seat cover, slip cover, and harness pads can be cleaned according to the instructions on the tag attached to the seat cover.

SIP Insert and Pads

- 1 - Remove SIP Insert pads from SIP insert. Insert pads should be spot cleaned only.

DO NOT machine wash the SIP insert pads. SIP insert can be cleaned according to the instructions on the tag attached to the seat cover.

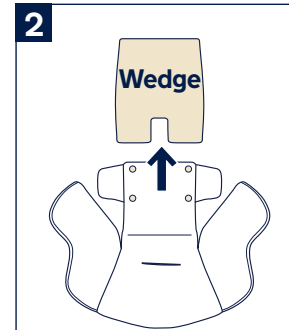
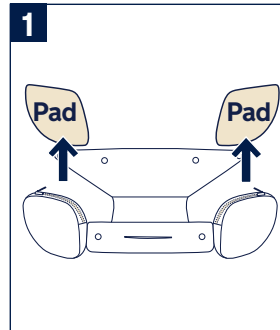
Zip pads back into SIP insert and reinstall before using car seat. SIP insert **MUST** be used for a child up to 40 lb (18 kg). After 40 lb (18 kg), it can be removed when child no longer fits comfortably between the insert's sides.

Infant Insert and Wedge

- 2 - Remove support wedge located on the back side of the infant insert.

Wedge should be spot cleaned only.

DO NOT machine wash the wedge. Infant insert can be cleaned according to the instructions on the tag attached to the seat cover.



Seat Cover Removal

⚠ WARNING: Do not attempt to disassemble the child restraint. Only perform steps shown in this manual.

⚠ WARNING: NEVER use the seat without the seat cover installed.

Removing the seat cover involves removing the cover from the head support, the leg rest, and the entire child restraint.

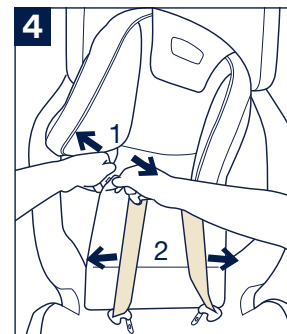
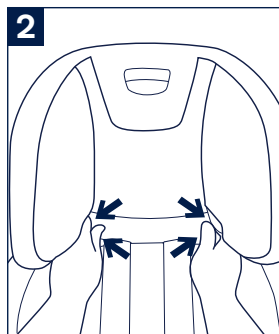
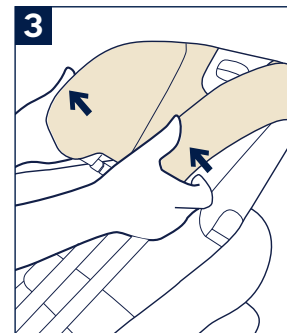
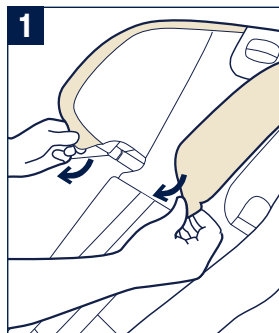
Checklist Before Removing Seat Cover

- ☐ Raise head support to highest position (manual p.32)
- ☐ Loosen/unbuckle harness and chest clip (manual p.22).
- ☐ Remove harness pads, head insert, SIP insert, slip cover, and infant insert (manual p.24-28).
- ☐ Unhook tether from back of seat (manual p.40).

⚠ Take care when removing head support cover so as not to damage the energy absorbing foam underneath.

Remove Head Support Cover

- 1** - Undo the snaps on the bottom of the head support cover.
- 2** - Undo the upper and lower snaps (location indicated by the four arrows) in the center of the head support cover.
- 3** - Gently pull the cover out of the retaining channel along the edge of the head support.
- 4** - Undo the snaps around the harness straps **(1)**. Slide the straps out to remove the head support cover **(2)**.



Remove Cover from Leg Rest

- 1 - Position leg rest with the bottom visible to you. Locate the four tabs on the bottom of the leg rest. Pushing each tab in the direction indicated releases a corner of the fabric-covered leg rest frame (detailed in **step 2**).
- 2 - While pushing in one of the tabs (1), pull on the fabric-covered leg rest frame at the corner connected to that tab (2).

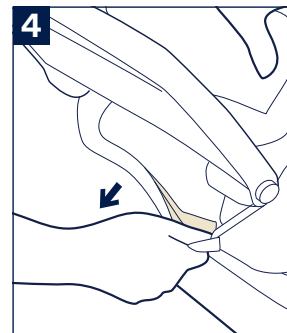
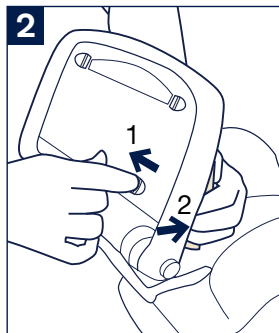
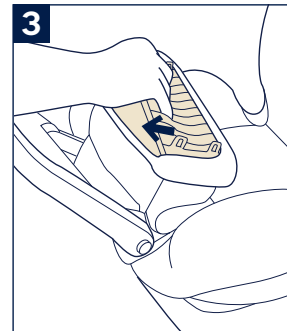
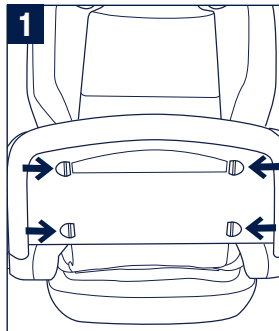
Tip: Start with one of the **bottom corners** and use the fabric to tug the leg rest frame until it pops out. A gentle force is necessary, so pull straight back from the leg rest so as not to bend or break the plastic tab.

Repeat for the other three corners. All four corners of the leg rest frame need to be pulled out so that the frame completely detaches from the leg rest.

- 3 - Take the removable leg rest frame out of the fabric cover and store it until you are ready to put the seat cover back on.

Tip: The easiest way to store the frame is to put it back into the leg rest without the fabric for now. Align the tabs and pop it back into place.

- 4 - Undo black hook and loop strip under leg rest.



Remove Cover from Child Restraint

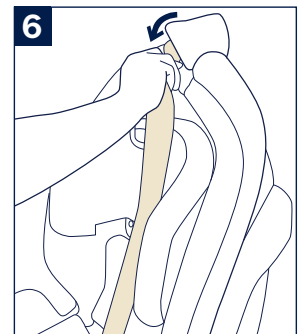
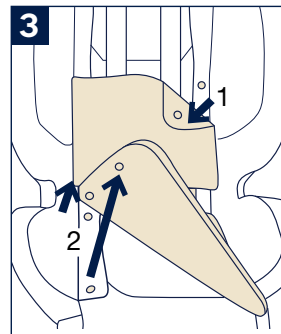
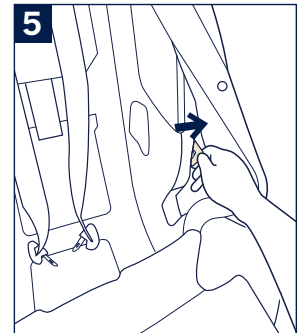
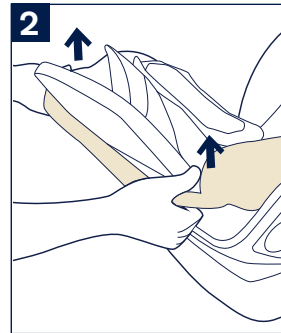
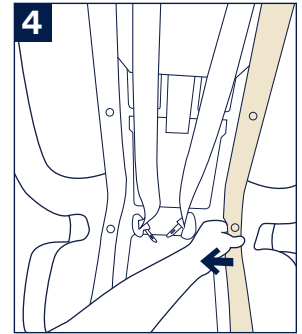
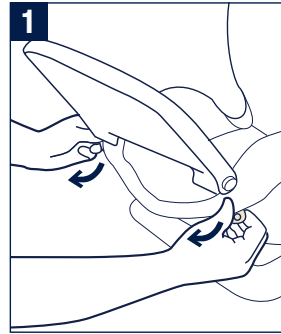
- 1** - Undo the snaps on the front of the seat, being careful not to damage the hidden white plastic tabs.
- 2** - Gently begin pulling the seat cover out of the retaining channel along the edge of the child restraint.
- 3** - Unsnap the lower back seat cover from the sides **(1)** and the bottom **(2)** of the seat. Remove.
- 4** - On both sides, near the booster lap belt path, undo the snap that secures the seat cover to the inside of the seat.

Be careful not to damage the white plastic tab tucked into the retaining channel at the booster lap belt path.

- 5** - Unhook the white plastic tab from the button on the edge of the seat, near the magnetic buckle holder area.

Finish pulling the entire seat cover out of the retaining channel.

- 6** - Lower the head support to the lowest position and slide the tether strap out to completely remove the seat cover from the child restraint.

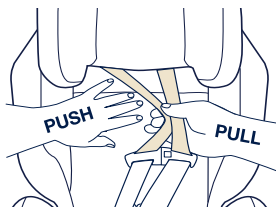


Clean Harness Adjuster

⚠ WARNING: Do not attempt to disassemble the child restraint. Only perform steps shown in this manual.

Harness Function Test

PUSH on back of seat and firmly **PULL** forward on the harness straps without pressing release button.

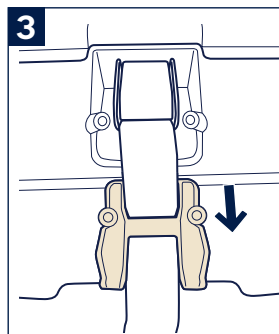
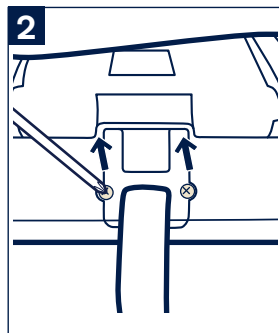
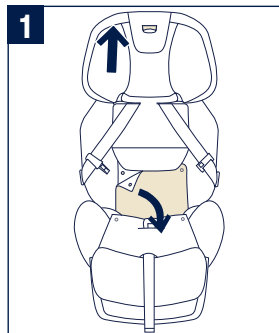


If harness remains tight, harness adjuster is functioning normally.

⚠ If harness loosens, follow Clean Harness Adjuster steps.

To Access Harness Adjuster

- 1 - Adjust head support to highest position, unsnap seat cover and pull to front of seat.
- 2 - Remove the two Phillips head screws from the Harness Adjuster cover. **KEEP** screws for reinstall.
- 3 - Remove Harness Adjuster Cover and slide forward on harness till it is out of the way.



Clean Harness Adjuster (continued)



To Clean Harness Adjuster

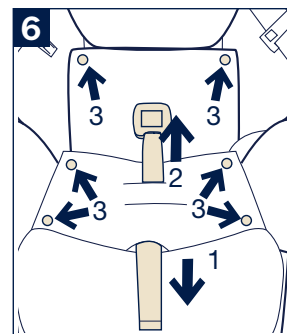
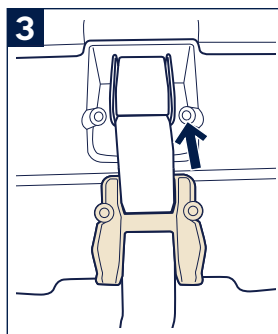
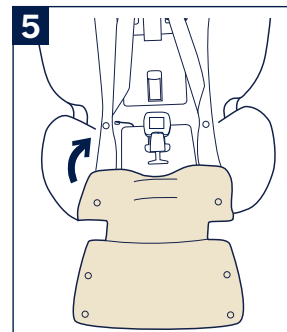
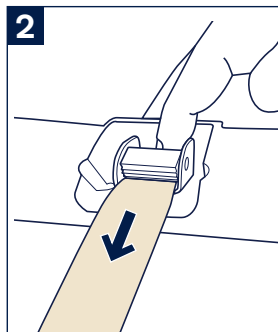
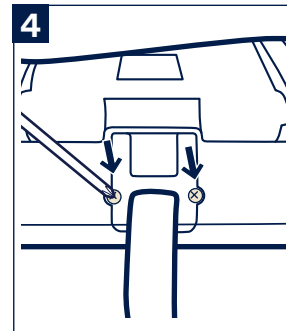
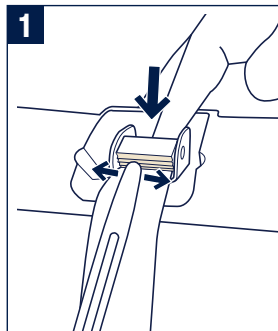
- 1 - While pressing Harness Adjuster button, use brush included in Care Instructions to brush/scrape the area and each tooth/groove down to where the harness and tooth/grooves meet. Use brush handle to remove stubborn debris.
- 2 - Pull Harness out slightly to help remove debris out of teeth area. Clean each tooth/groove carefully. The recline may need to be reduced to help pull debris away from the teeth.

When fully cleaned, release locking mechanism and re-do **Harness Function Test (p.10)**.

Reassemble Harness Adjuster

- 3 - Slide Harness Adjuster Cover up harness and reattach Harness Adjuster Cover to the seat.
- 4 - Attach Harness Adjuster Cover with two previously removed Phillips head screws
- 5 - Replace seat cover in seat.
- 6 - Pull harness strap (1) and buckle (2) through slot in seat cover and snap seat cover back to seat (3).

Repeat Harness Function Test (p.10) with fully assembled child restraint. If harness does not remain tight after reassembly, contact Nuna at 1-855-686-2891 or info.usa@nunababy.com for additional assistance with cleaning.




Seat Cover Assembly

Reverse steps of **Seat Cover Removal** (p.4-11).

Assembly Checklist

- ☐ Leg rest cover is secured around the leg rest frame, and the frame is secured back inside the leg rest.
- ☐ The hook and loop closure under the leg rest is attached.
- ☐ All snaps are attached.
- ☐ The harness buckle, harness adjustment strap, and tether strap are routed through the seat cover.
- ☐ The white plastic tabs on either side of the seat cover are folded under the fabric before the fabric is tucked into the retaining channel.
- ☐ The edge of the seat cover is tucked into the retaining channel along the edge of the seat.
- ☐ The edge of the head support cover is tucked into the retaining channel along the edge of the head support.

Additional Care

 **WARNING:** Do not attempt to disassemble the child restraint. Only perform steps shown in this manual.

Cleaning the Harness

The child restraint harness system cannot be removed. **DO NOT attempt to remove the harness system.** When required, harness may be cleaned with a cloth and warm, soapy water.

Towel dry excess water and allow to air dry.

Cleaning the Shell

Shell may be cleaned with a damp cloth.

Towel dry.

DO NOT use abrasive cleansers on the shell.

NEVER use steam or high-pressure cleaning methods on the shell and harness as it is impossible to know or control the effects of these methods on the components performance.

Cleaning the Buckle

BUCKLE CANNOT BE REMOVED.

To clean buckle, wipe with damp cloth.

DO NOT use bleach or other harsh chemicals to clean any part of the seat.

DO NOT use lubricants in buckle.

DO NOT attempt to iron the covers or pads.

Nuna Baby Essentials, Inc. Nuna and all associated logos are trademarks.



Nuna Baby Essentials, Inc.

70 Thousand Oaks Blvd. | Morgantown, PA 19543

1.855.NUNA.USA | nunababy.com