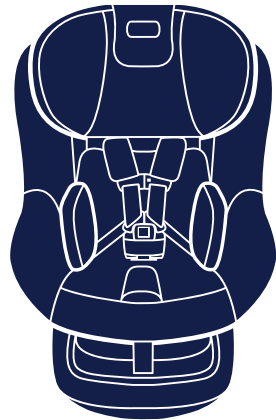


revv™ maxx



nuna®

Thank you!

You've just purchased a Nuna product, and you can be sure that your child is getting the best there is. Our products are expertly engineered for safety, with luxury fabrics and sophisticated style. Whatever made you fall in love with Nuna, rest assured your adventures with your little one will be easier from now on, freeing you to enjoy more happy family moments together.

Easy Installation

Our products are designed to make your life easier, so installing this child restraint doesn't require outside assistance. While we encourage the use of Certified Child Passenger Safety Technicians to ensure you have installed the seat correctly, you can install the child restraint in your vehicle without these professionals by carefully reading and following these instructions.



**IMPORTANT!
KEEP THESE
INSTRUCTIONS FOR
FUTURE REFERENCE:
*READ CAREFULLY***

⚠ WARNING: Read and understand **ALL** warning labels affixed to the child restraint and all written instructions. Failure to do so can result in serious injury or death. Store instructions in the slot on the back of the seat shell for future use.

Contents

Product Information

Product Registration	4
Limited Warranty	5
Contact	5
Child Usage Requirements	6
Warnings	8
Car Seat Use after a Crash	11
Vehicle Compatibility	12

Child Restraint Overview

Parts List	18–21
Features Usage	22
Child Restraint Installation	44

Rear Facing Installation	50
Forward Facing Installation	52
Securing Child	54
Cleaning and Maintenance	58

Product Information

Model Number: _____

Manufactured in (date): _____

Product Registration

Please fill in the above information. The model number and the manufactured in date are located on a label on the bottom of your child restraint. Fill out the prepaid registration postcard attached to the harness strap and mail it today.

Child restraints could be recalled for safety reasons. Register your child restraint so you can be notified in case of a recall. Send your name, address, e-mail/phone number if available and the restraint's model number and manufacturing date to:

Nuna Baby Essentials Inc.
70 Thousand Oaks Blvd.
Morgantown, PA 19543
or call 1.855.NUNA.USA

For recall information, call the U.S. Government's
Vehicle Safety Hotline at: 1.888.327.4236
(TTY: 1.800.424.9153) or go to <http://www.NHTSA.gov>

Limited Warranty

We have purposely designed our high-quality products so that they can grow with both your child and your family. Because we stand by our product, our gear is covered by a custom limited warranty per product, starting from the day it was purchased. Please have the proof of purchase, model number and manufactured in date available when you contact us.

For warranty information please visit:

www.nunababy.com/usa/warranty

Contact

For replacement parts, service, or additional warranty questions, please contact our customer service department.

In the USA:

infousa@nunababy.com
www.nunababy.com
1.855.NUNA.USA

Child Usage Requirements

To use this child restraint, your child must meet **BOTH** the weight and height requirements:

Rear Facing Weight: 5-40 lb (2.3-18 kg)

Rear Facing Height: 18-43 in (46-110 cm)

Forward Facing Weight: 30-65 lb (13.6-30 kg)

Forward Facing Height: 34-49 in (87-125 cm)

The SIP insert (p.26) **MUST** be used for a child up to 40 lb (18 kg). After 40 lb (18 kg), it can be removed when child no longer fits comfortably between the insert's sides.

The infant insert (p.28) is for use with infants who weigh between 5-11 lb (2.3-5 kg).

DO NOT use the insert for a child who weighs more than 11 lb.

Which mode is best for my child?

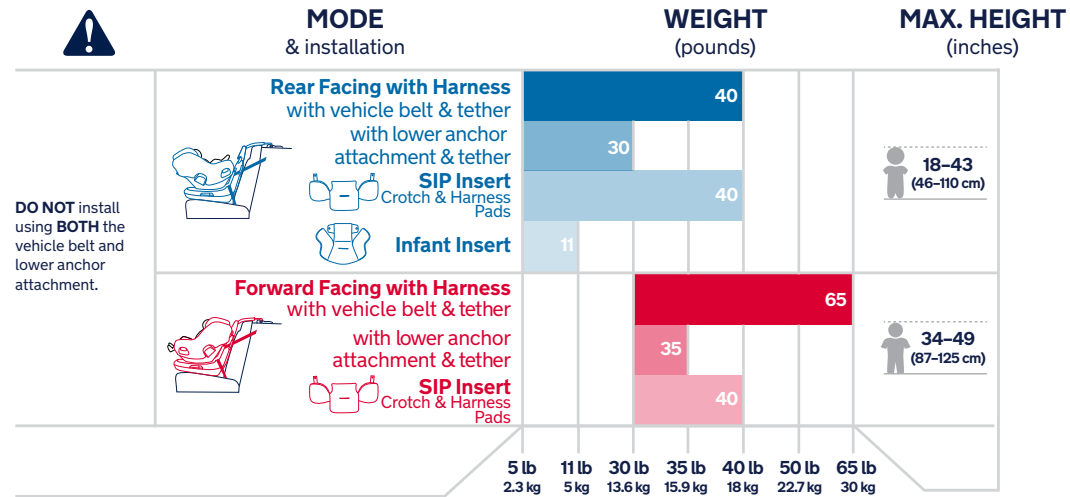
Consult the chart on the next page to determine the proper mode based on your child's weight/height. Throughout these instructions and on the product labels, the two modes are identified by color as indicated on the next page.

American Academy of Pediatrics Recommendation

The AAP recommends children should ride **rear facing for as long as possible**, until they reach the maximum weight or height allowed by their seat. For this seat, the rear facing maximum is 40 lb (18 kg) or 43 inches (110 cm).

Instruction Color Key

● Rear facing ● Forward facing



⚠️ WARNING
DEATH OR SERIOUS INJURY CAN OCCUR,

Use **ONLY** with children who weigh 5–65 lb (2.3–30 kg) and whose height is 49 in. (125 cm) or less.

DO NOT use in any configuration not shown in the instructions. Please refer to vehicle owner’s manual for recommended or suggested installation positions.

NEVER use the child restraint in a position between rear facing or forward facing. Always make sure the restraint is locked in the direction appropriate for your child.

DO NOT use the child restraint if it is more than 10 years old. Check the label or stamped “do not use after” date on the bottom of the child restraint.

DO NOT use another manufacturer’s cover, padding, fabric, or other soft materials with this child restraint, as these constitute an integral part of the child restraint performance.

DO NOT modify your child restraint or use any accessories or parts supplied by other manufacturers unless they are approved by Nuna for use with this child restraint. Doing so may be unsafe and may void the warranty.

DO NOT use a cut, frayed or damaged vehicle seat belt. **NEVER** use the child restraint if it has frayed or cut harness straps, any damaged or missing parts, or has been in a damaging crash. To find out if damaged parts are replaceable, call 1-855-NUNA-USA.

NEVER use a car seat that has been involved in a moderate to severe crash. **See page 11** to learn the difference between a minor and moderate to severe crash.

This child restraint system meets all applicable requirements of Federal Motor Vehicle Safety Standard (FMVSS) 213. This restraint is certified for use only in passenger vehicles. This restraint is not certified for aircraft use, as aircraft belts will not accommodate proper installation of this restraint.

DO NOT allow anyone who has not read the instructions to install or use this child restraint. **NEVER** give this child restraint to another person without also giving them these instructions.

NEVER leave child unattended in this child restraint.

To avoid strangulation, do not allow children to play with vehicle or child restraint belts or straps. If possible, move unused belts out of reach.

Cover the child restraint when your vehicle is parked in sunlight. Parts of a child restraint can become very hot if left in the sun, and can burn a child's skin. Check for hot parts before putting your child in the child restraint.

NEVER leave child restraint unsecured in your vehicle even when it is unoccupied. In a crash, it could become a projectile and injure other vehicle occupants.

NEVER leave luggage or other objects unsecured in a vehicle, as they are liable to cause injuries in the event of a collision.

Car Seat Use after a Crash

The National Highway Traffic Safety Administration (NHTSA) recommends that car seats be replaced following a moderate or severe crash. Car seats do not automatically need to be replaced following a minor crash.

A minor crash is one in which **ALL** of these apply:

- The vehicle was able to be driven away from the crash site.
- The vehicle door nearest to the car seat was not damaged.
- None of the passengers in the vehicle sustained any injuries in the crash.
- If the vehicle has air bags, none of the air bags deployed during the crash.
- There is no visible damage to the car seat.

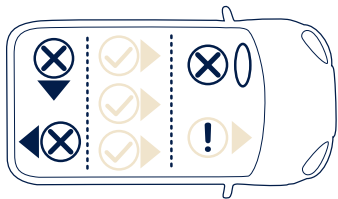
Any crash that does not meet all of the above criteria for a minor crash is considered a moderate to severe crash. **NEVER** use a car seat that has been involved in a moderate to severe crash.

Information from nhtsa.gov

Vehicle Compatibility

⚠ WARNING: You **MUST** read and understand **ALL** child restraint related instructions and warnings in your vehicle owner's manual to correctly and safely use this child restraint in your vehicle.

This child restraint can **ONLY** be installed on vehicle seats that face forward. **DO NOT** install in seats that face to the sides or rear of the vehicle.



IMPORTANT: According to accident statistics, children are safer when properly restrained in the rear seating positions than in the front seating positions.



⚠ WARNING: SERIOUS INJURY OR DEATH MAY OCCUR. NEVER install this child restraint rear facing in a vehicle seating position with a frontal air bag unless it is turned off. If your vehicle is equipped with front passenger air bags, check your vehicle owner's manual for child restraint installation instructions.

Using Lower Anchor Attachment and Tether

This child restraint can be installed without vehicle belts by connecting the child restraint's lower anchor attachment and tether to the vehicle's lower and tether anchors. Refer to your vehicle owner's manual to determine your vehicle's lower and tether anchor locations, and how to correctly install this child restraint in your vehicle.

The tether should **ALWAYS** be used in **BOTH** rear facing and forward facing installations, even when installing the child restraint with the vehicle belt.

Lower Anchor Attachment and Tether

This child restraint is designed to be used with lower anchors at the standard spacing of 11 inches (28 cm). Vehicle lower anchors are defined as 11 inches (28 cm) from the center of one lower anchor to the center of another lower anchor.

⚠ WARNING: DO NOT USE the lower anchor attachment to attach this child restraint when restraining a child weighing more than 30 lb (13.6 kg) **rear facing** or 35 lb (15.9 kg) **forward facing**. Check your vehicle owner's manual for tether anchor weight limits.

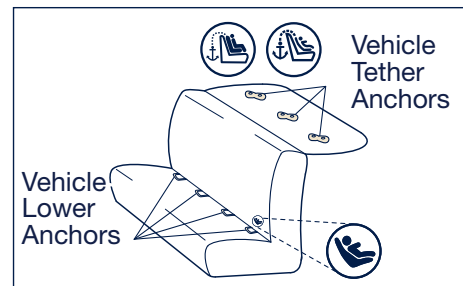
Vehicle Lower and Tether Anchor Locations

Common locations of vehicle lower and tether anchors in a vehicle are shown below (consult your vehicle owner's manual).

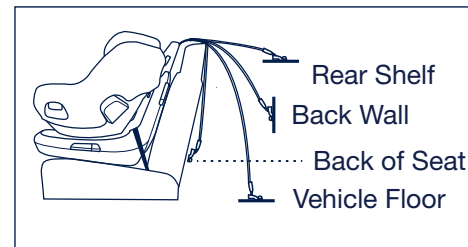
Anchors

The child restraint's tether should be used for **ALL** installations as it provides a more secure installation and is proven to be safer. In a crash, the tether limits a child's movement, protecting their head and neck and reducing the risk of injury.

Common LATCH locations
(consult your vehicle manual):



Other common tether locations
(consult your vehicle manual):



Using Vehicle Belts

The following types of vehicle belts **CAN BE USED** to install child restraint.

Lap/Shoulder Belt



! Belts **MUST** be able to be locked. Refer to your vehicle owner's manual to determine if the belts in your vehicle lock by: 1) switching the seat belt's retractor by pulling the belt all the way out, or 2) a locking latch plate that locks the vehicle's seat belts so they will not move freely.

If the belt cannot be locked using one of these methods, contact Nuna Customer Service for a locking clip.

Vehicle Belts that CANNOT Be Used

The following types of vehicle belts **MUST NOT** be used to install this child restraint. They will not provide a secure, safe installation. Refer to your vehicle owner's manual for which seating positions in your vehicle can be used to install this child restraint using vehicle belts or **LATCH**.

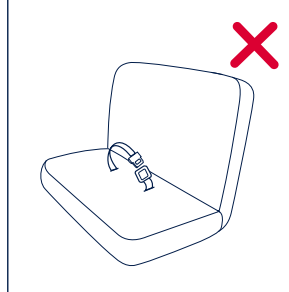
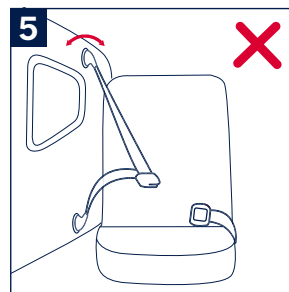
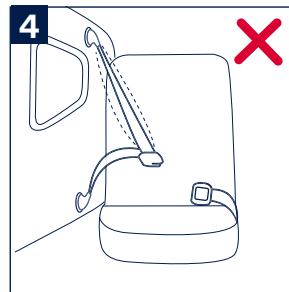
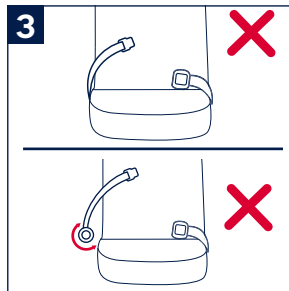
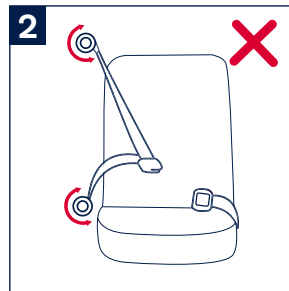
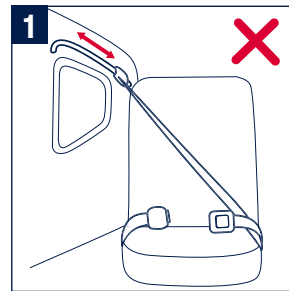
1 - Motorized Belts (Automatic)

2 - Dual Retractor Lap/Shoulder Belts

3 - Lap Belt Only Cannot be Used

4 - Airbag/Inflatable Belts

5 - Door Mounted Belts

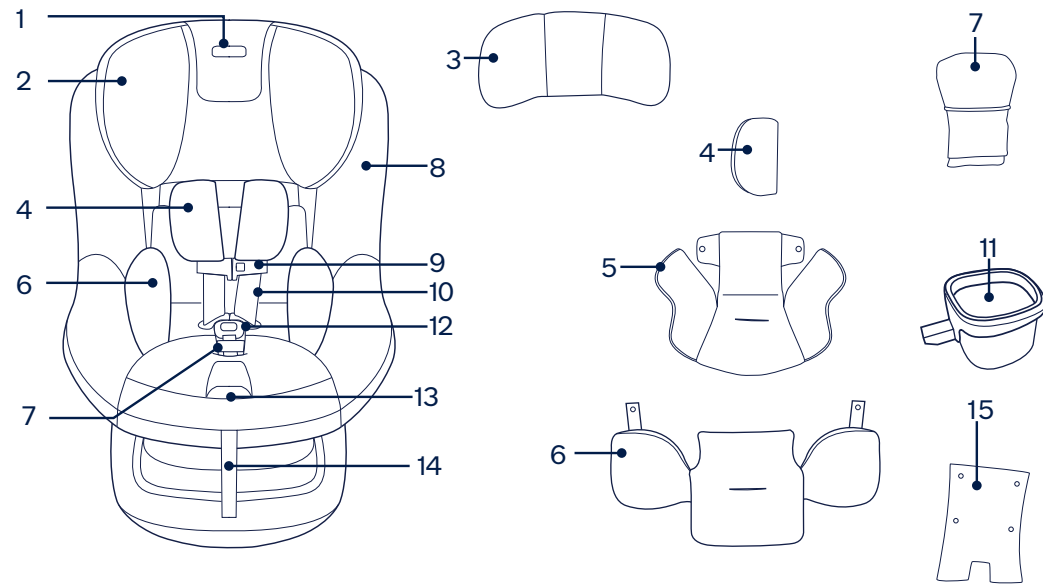


Child Usage Requirements

Parts List

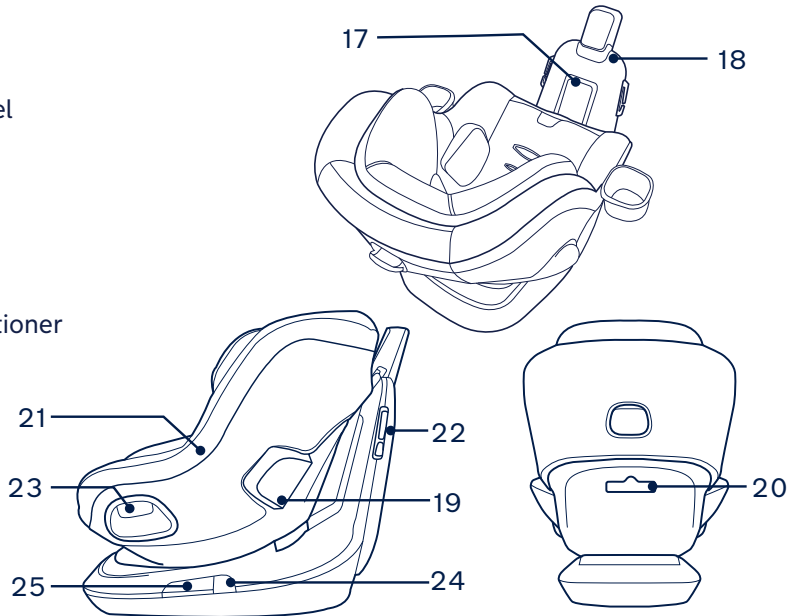
Front View

- | | | | |
|---|----------------------|----|--------------------------|
| 1 | Head Support Button | 9 | Chest Clip |
| 2 | Head Support | 10 | Harness Strap |
| 3 | Head Insert | 11 | Cup Holder (x2) |
| 4 | Shoulder Harness Pad | 12 | Harness Buckle |
| 5 | Infant Insert | 13 | Harness Release Button |
| 6 | SIP Insert | 14 | Harness Adjustment Strap |
| 7 | Crotch Pad | 15 | Infant Insert Wedge |
| 8 | Seat Cover | | |



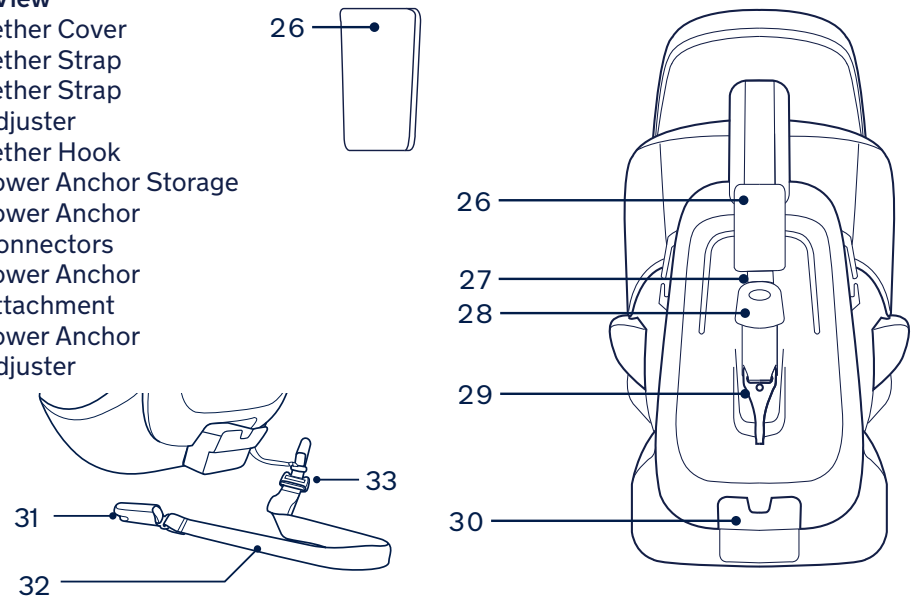
Side View & Top View

- 17 True Tension™ Door
- 18 Anti-Rebound Panel
- 19 Side Impact Protection Pod
- 20 Instruction Manual Storage
- 21 Magnetic Buckle Tongue Holder
- 22 Shoulder Belt Positioner
- 23 Rotate Position Button
- 24 Recline Position Button
- 25 Recline Position Window



Back View

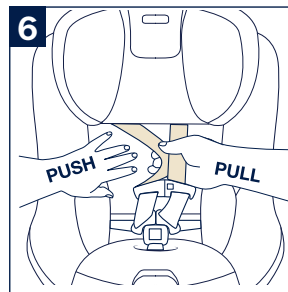
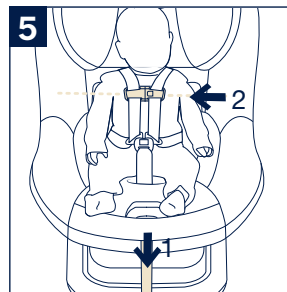
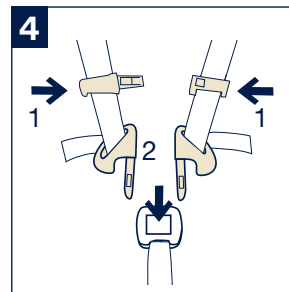
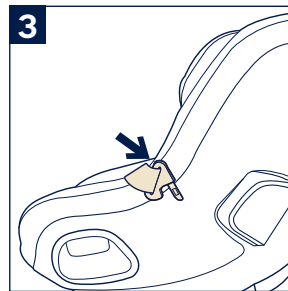
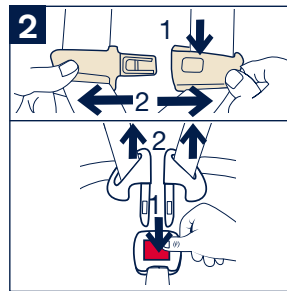
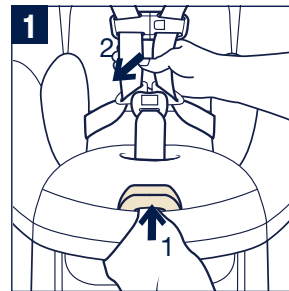
- 26 Tether Cover
- 27 Tether Strap
- 28 Tether Strap Adjuster
- 29 Tether Hook
- 30 Lower Anchor Storage
- 31 Lower Anchor Connectors
- 32 Lower Anchor Attachment
- 33 Lower Anchor Adjuster



Features Usage

Harness

- 1 - To Loosen Harness,** press on harness release button **(1)** while pulling forward on the harness straps **(2)**.
- 2 - To Open Chest Clip,** press button on front of clip **(1)** and pull clip apart **(2)**. **To Open Harness Buckle,** press red button on front of buckle **(1)** and pull out buckle tongues **(2)**.
- 3 - To Use Magnetic Buckle Tongue Holders,** loosen and unbuckle harness. Place the buckle tongues against the magnetic area on the side of the child restraint so that the tongues are held in place.
- 4 - To Fasten Chest Clip,** push chest clip halves together until they click. **(1)** Pull to check. **To Fasten Buckle,** insert buckle tongues firmly into buckle until they click. **(2)** Pull up on tongues to ensure they are locked.
- 5 - To Tighten Harness,** pull on harness adjustment strap. **(1)** Place chest clip at child's armpit level after tightening. **(2)**
- 6 - Harness Function Test**
Without pressing the harness adjustment button, pull forward firmly on the harness straps at the shoulder.
▲ If harness loosens, follow Clean Harness Adjuster steps (p.58) or in Care Instruction Manual (p.8).



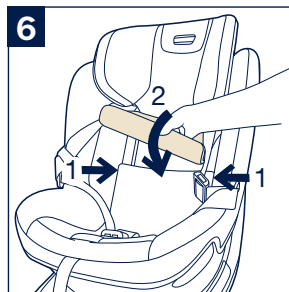
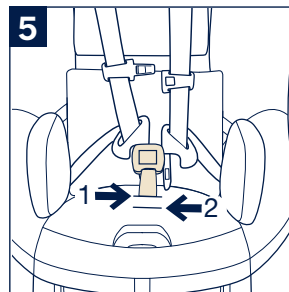
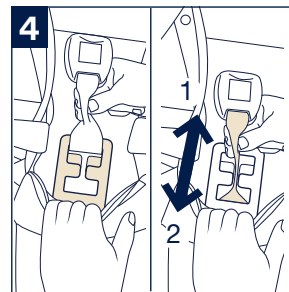
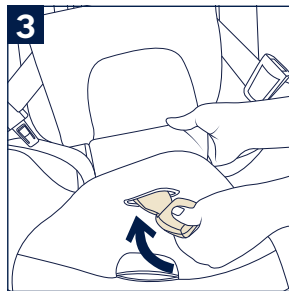
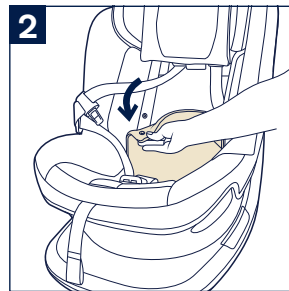
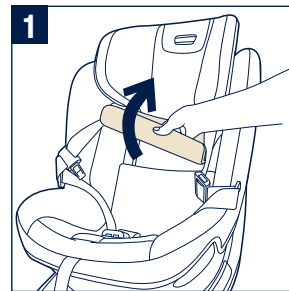
Adjustable Harness Buckle

- 1 - The harness buckle may be adjusted for improved comfort or fit of any child. Loosen harness, open the chest clip and harness buckle. Lift up on the lower section of the head support pad (1).
- 2 - Locate and undo 2 snap buttons on the seat back pad.
- 3 - Remove the harness buckle from the seat pad, and pull forward on the seat back pad.
- 4 - Locate the harness buckle adjustment slots in the seat shell and squeeze/pinch the sides of the harness buckle strap together. Drop the pinched strap slightly to allow it to pass between the positions.
Slide the harness buckle strap forward or rearward (as shown) to best fit your child.

Use the position that is closest to (but not under) your child.

- 5 - Place buckle back through corresponding slot in seat pad, attach seat pad, and replace infant insert (if using).
- 6 - Reattach both seat back pad snap buttons (1), and pull down on the lower section of the head support pad (2).

The infant insert (p.28) is for use with infants who weigh between 5–11 lb (2.3–5 kg).
DO NOT use the infant insert for a child who weighs more than 11 lb.



SIP Insert Use

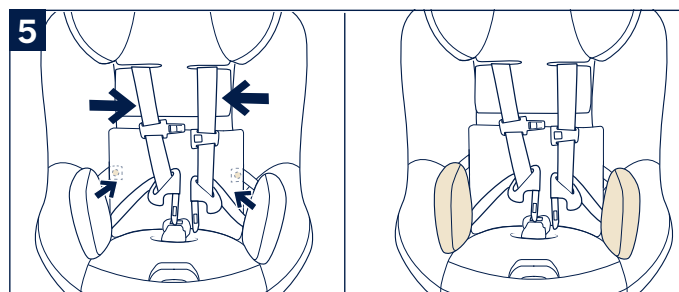
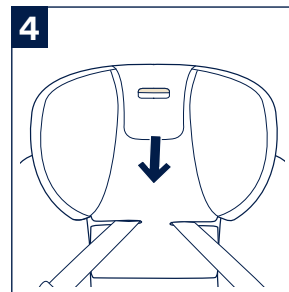
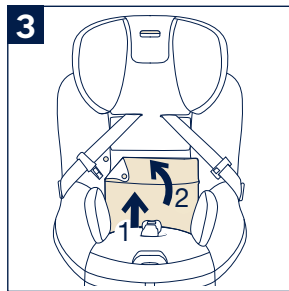
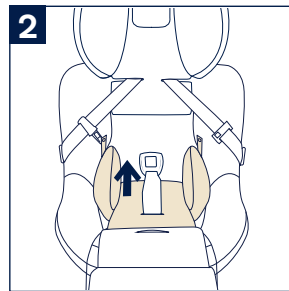
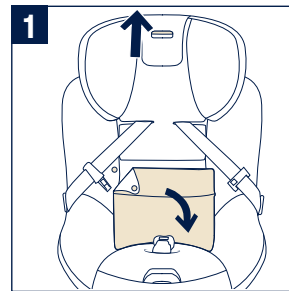
The SIP insert **MUST** be used for a child up to 40 lb (18 kg). After 40 lb (18 kg), it can be removed when child no longer fits comfortably between the insert's sides.

- 1 - Adjust head support to highest position, unsnap seat cover and pull to front of seat.
- 2 - Pull buckle through opening in SIP insert.

When properly installed, the infant insert will not interfere with harness straps or harness buckle. Harness buckle must be used in **back position** when SIP insert is used (p.28).

- 3 - Pull buckle through rear slot in seat cover (1) and snap seat cover back to seat (2). Ensure flaps of SIP insert are sticking out around seat cover.
- 4 - Adjust head support to lowest position.
- 5 - Pull harness straps to center of the seat. Attach 2 snaps on SIP insert to back of seat pad.

Make sure SIP insert sits at proper height between child's hips and sides of restraint not tucked behind child or down into seat. Gently press the SIP insert down and back into the seat, eliminating any gaps without compressing the seat pad (p.56).



Head Insert

- 1 - The head insert can be secured over the seat cover by sliding the rear straps into the slots.

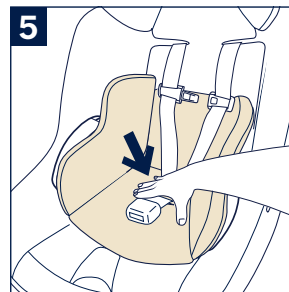
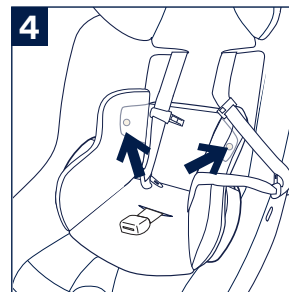
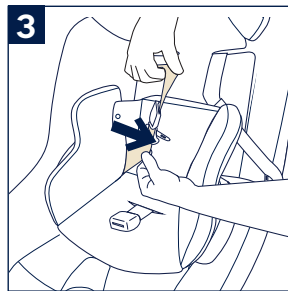
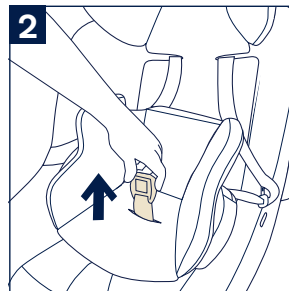
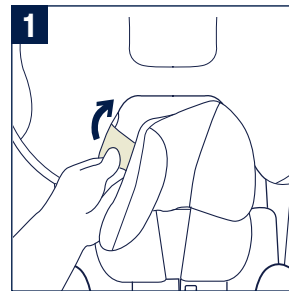
Infant Insert & Insert Wedge

The infant insert **MUST** be removed once the child reaches 11 lb. The insert can improve the harness fit and recline angle for smaller infants.

When rear facing, the harness **MUST** be positioned **AT** or **JUST BELOW** the child's shoulders. If the harness straps are positioned **ABOVE** the child's shoulders, use the infant insert to adjust the fit.

- 2 - Pull harness buckle up through slot in bottom of insert.
- 3 - Route harness straps through sides of insert.
- 4 - Attach snaps on insert to keep harness straps in place.
- 5 - Push insert firmly into child restraint.

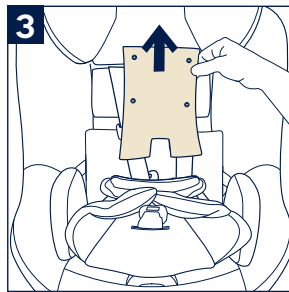
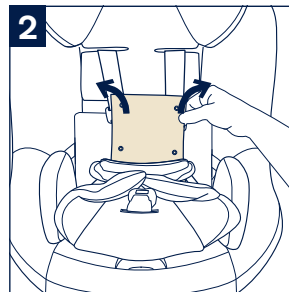
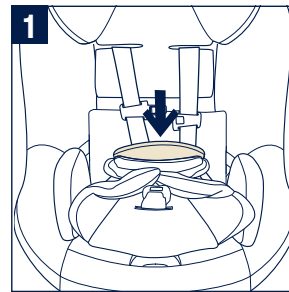
When properly installed, the infant insert will not interfere with harness straps or harness buckle.



Infant Insert & Insert Wedge (cont.)

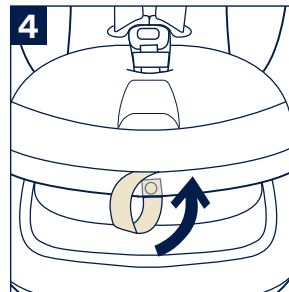
The infant insert wedge **MUST** be removed before cleaning the infant insert.

- 1 - To remove infant insert wedge, pull the top section of the infant insert forward.
- 2 - Undo all of the snaps on the infant insert wedge.
- 3 - Pull up to remove.



Harness Adjustment Strap Storage

- 4 - To secure harness adjust strap, attach to seat with hook and loop tabs as shown.



Shoulder and Crotch Pad

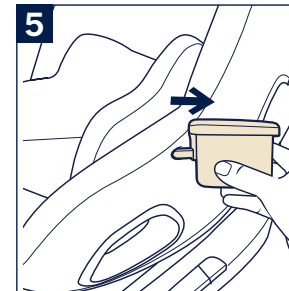
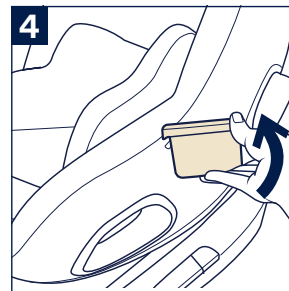
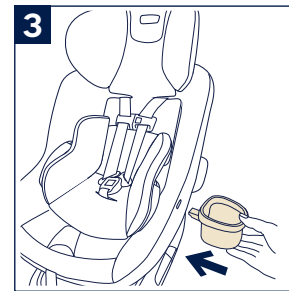
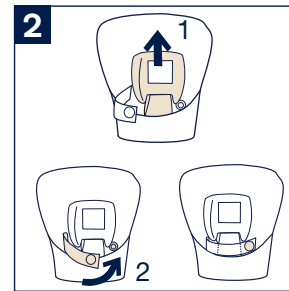
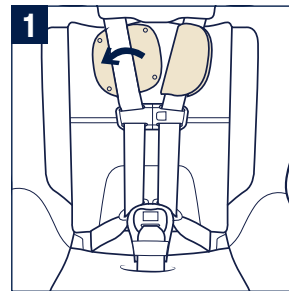
⚠ ALWAYS use shoulder and crotch pads until SIP insert is removed. Remove pads once SIP insert is removed.

- 1 - To use the shoulder pads, fold each pad in half over the harness strap and attach the snaps.
- 2 - To use the crotch pad, slide the harness buckle through the loop on the pad **(1)**. Insert the strap through the webbing loop and attach the snap **(2)**.

Cup Holder

- 3 - Insert cup holder into opening on side of child restraint.
- 4 - To remove, lift up on the cup holder to release locking tab.
- 5 - Pull out to remove.

DO NOT place glass or metal containers or hard or sharp objects in cup holder. In a crash they could cause serious injury. **NEVER** use cup holder for hot beverages.



Head Support Adjustment

There are 11 head support positions.

- 1 - With harness loose (p.22), squeeze head support button and move head support up or down to desired position.

Release head support button and slide head support slightly up or down until locked into position. The head support will click when it locks.

CHECK that head support is locked on both sides by pulling firmly up and down.

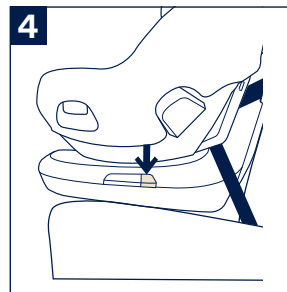
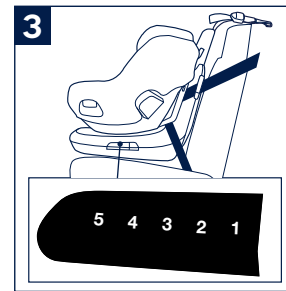
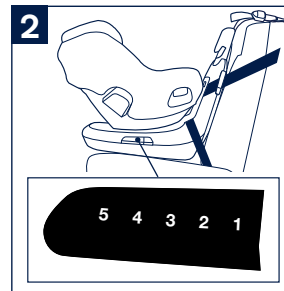
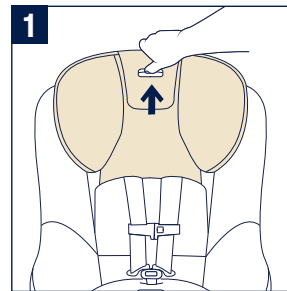
Recline

There are 5 recline positions.

- 2 - Position 1-5 in **rear facing** use **with tether** for children 5–40 lb (2.3–18 kg). Without tether, **ONLY** use **rear facing** recline position 1.

If infant's head falls forward, child restraint must be reclined more. Use infant insert with infants 5–11 lb (2.3–5 kg) to increase recline angle.

- 3 - Position 1-5 in **forward facing** use **with tether** for children 30–65 lb (13.6-30 kg). Without tether, **ONLY** use **forward facing** recline position 1.
- 4 - Press recline button (1) on either side of the child restraint and move seat to desired position. Release recline button and check that child restraint is locked in desired recline position. Loosening the slack on tether from vehicle anchor or tether hook is helpful prior to adjusting recline. Tighten tether once recline adjustment is complete (p.38).



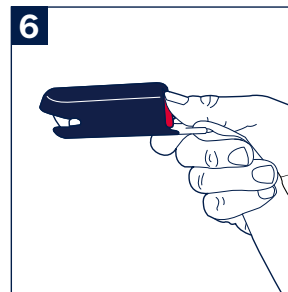
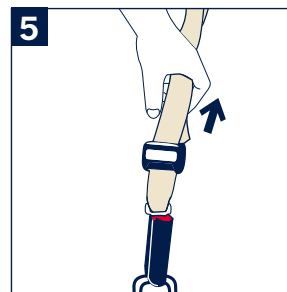
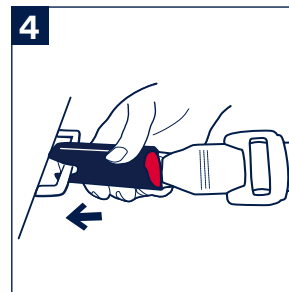
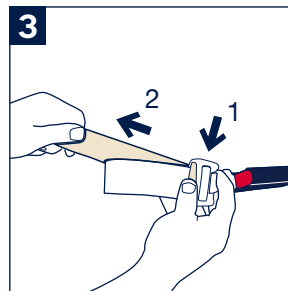
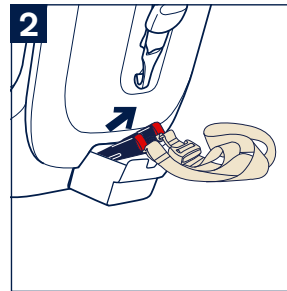
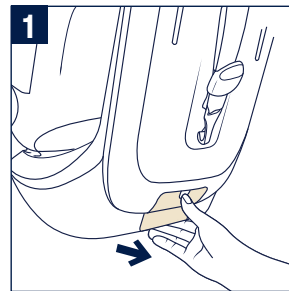
Lower Anchor Attachment Use

The lower anchor attachment can be used instead of a vehicle belt to install this child restraint. The lower anchor attachment **MUST NOT** be used **rear facing** if your child weighs more than **30 lb (13.6 kg)** or **forward facing** if your child weighs more than **35 lb (15.9 kg)**.

The lower anchor attachment is stored on the back of seat base in lower anchor attachment storage compartment.

- 1 - Open the lower anchor attachment storage compartment door.
- 2 - Take out the lower anchor attachment and connectors.
- 3 - Lengthen lower anchor belt for use by pressing adjuster button (1) while pulling on belt (2).
- 4 - For belt routing, see p.48. To connect lower anchor attachment to vehicle lower anchors, press connector firmly onto vehicle lower anchor and pull to check.
- 5 - Remove all slack from lower anchor attachment by pulling loop at end of belt.
- 6 - To release lower anchor attachment, press red button on end of connector while pulling on belt. Store lower anchor attachment when not in use. Place one lower anchor connector in each half of the storage compartment. Fold excess belt webbing into compartment.

⚠ DO NOT cut the lower anchor attachment strap. It permanently secures the lower anchor attachment to the child restraint.



Tether Use

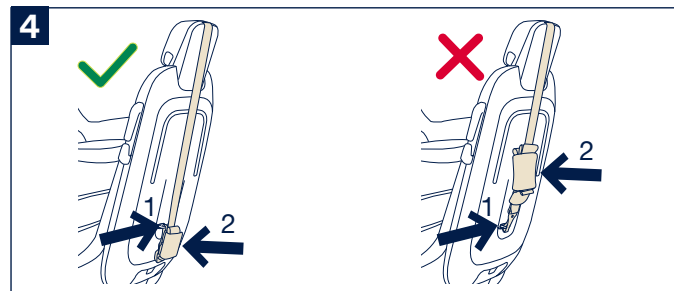
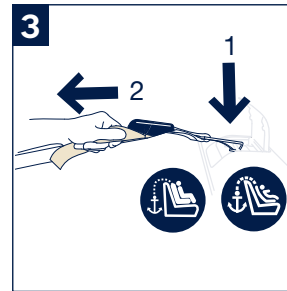
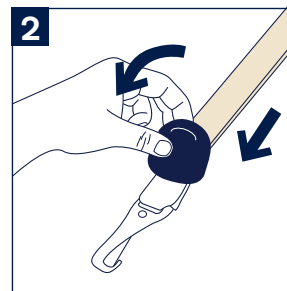
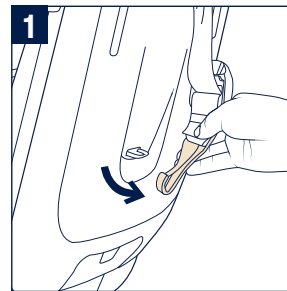
Tether **MUST** always be used.

- 1 - You may need to loosen tether adjuster before unclipping from anchor. Unclip the tether hook by pushing in the back of the hook while pulling the hook down and off of the anchor. Complete installation using your vehicle's Lap/Shoulder belt (p.46) or the Lower Anchor attachment (p.48).
- 2 - To extend tether for use, tilt tether adjuster and pull to lengthen.
- 3 - Locate the tether anchor in your vehicle; anchor locations can be found in your vehicle owner's manual. Look for the tether icon pictured here. Attach the tether hook to the vehicle tether anchor (1). Once tether is anchored, tighten by pulling on tether strap to remove all slack (2).

Tether Storage

- 4 - Attach tether hook to the back of the child restraint (1). Loose strap should be rolled neatly and stored under tether cover. (2). When not in use, tether **MUST** be properly stored. The tether needs to hang below the storage hook to prevent interference with vehicle seat and allow for recline adjustment (p.34).

⚠ WARNING: ALWAYS USE TETHER for rear facing and forward facing installation if vehicle is equipped with a tether anchor and vehicle requirements are met (see vehicle owner's manual).

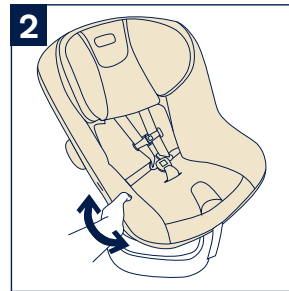
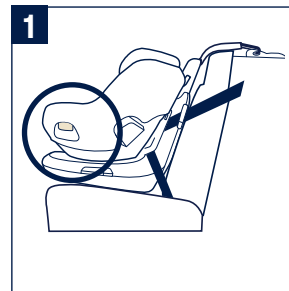


Rotate Seat

- 1 - Press the rotate button on either side of the seat.
- 2 - Rotate the seat rear facing or forward facing, until it clicks into place.
- 3 - Seat forward facing
- 4 - Seat rear facing

Ensure the seat is locked in your chosen position by releasing the rotate button and moving side-to-side slightly until you hear a click.

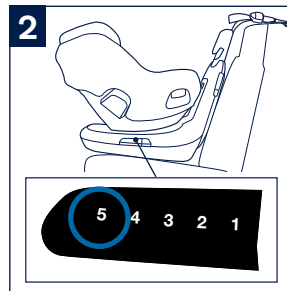
- 5 - **⚠ NEVER** use seat in an unlocked side position when traveling in vehicle.



True Tension™ Door

This child restraint has a True Tension™ door that aids in a simple and secure installation of the child restraint in your vehicle. It is located on the front side of the anti-rebound panel/base.

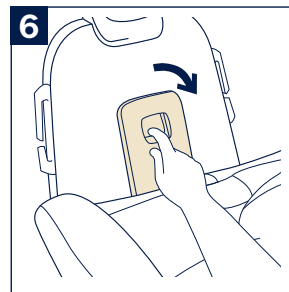
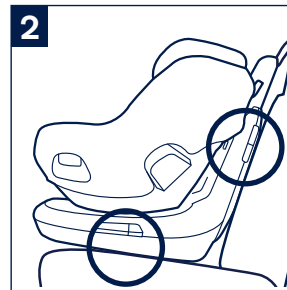
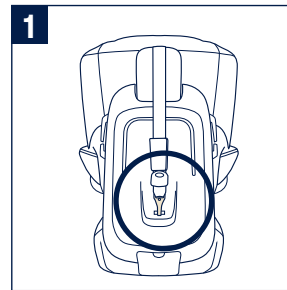
- 1** - Rotate the seat to rear facing position to access the True Tension™ door (p.40).
- 2** - Recline seat to position 5 (p.34) to better access the True Tension™ door.
- 3** - Lift door release button to open the True Tension™ door. Complete installation using your vehicle's Lap/Shoulder belt (p.46) or the Lower Anchor attachment (p.48).
- 4** - Close True Tension™ door by pressing firmly on door until it latches in place.



Child Restraint Installation

- 1 - You may need to loosen tether adjuster before unclipping from anchor. Unclip the tether hook by pushing in the back of the hook while pulling the hook down and off of the anchor.
- 2 - Place child restraint forward facing in a compatible vehicle seat (p.12). With the bottom of the child restraint parallel to the vehicle seat bottom, slide the seat back until the back of the child restraint contacts the vehicle seat back.
- 3 - Rotate the seat to rear facing to access True Tension™ door (p.42).
- 4 - Press recline button on either side of the child restraint and put the seat in position 5 (p.34).
- 5 - Attach tether to the vehicle tether anchor. Do not tighten the strap yet.
- 6 - Open the True Tension™ door.

Complete installation using your vehicle's Lap/Shoulder belt (p.46) or the Lower Anchor attachment (p.48)

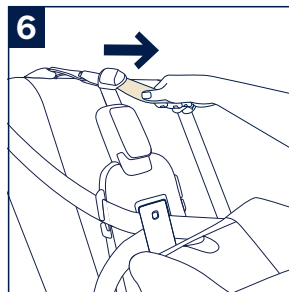
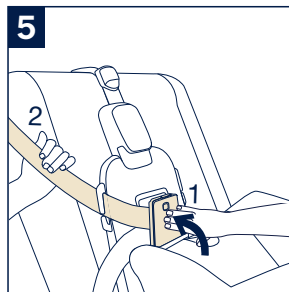
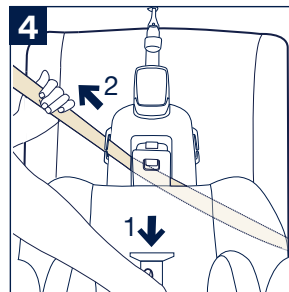
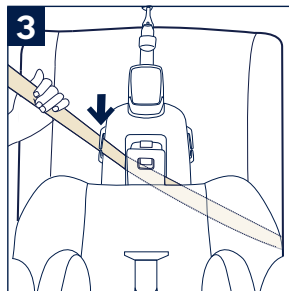
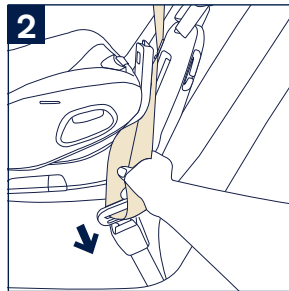


Lap/Shoulder Belt (preferred installation method)

- 1 - **CHECK** that car seat is in rear facing position (p.40) and set to recline position 5 (p.34). Attach the tether hook loosely to the vehicle tether anchor **(1)** and open True Tension™ door **(2)**.
- 2 - Route lap/shoulder belt under True Tension™ door and buckle the vehicle seat belt.
- 3 - Route shoulder belt through belt guide.
- 4 - While pushing down firmly on the car seat **(1)**, pull up on the vehicle shoulder belt to remove the slack **(2)**.
- 5 - Close the True Tension™ door **(1)**, and **lock vehicle belt (2)** (refer to vehicle owner's manual).
- 6 - Tighten the tether by pulling on the tether adjustment strap.

PULL up on the **SHOULDER BELT** again to remove any slack.

⚠ WARNING: Check that child restraint is securely installed before each use. Hold seat at the belt path and move seat in all directions. Seat should move less than 1 inch.

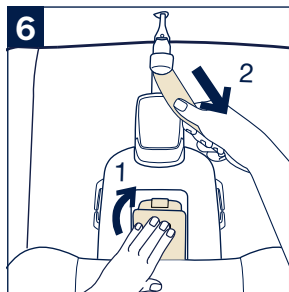
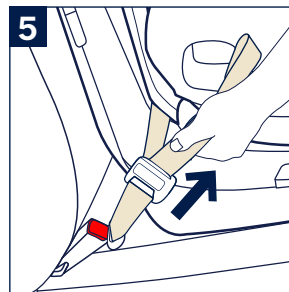
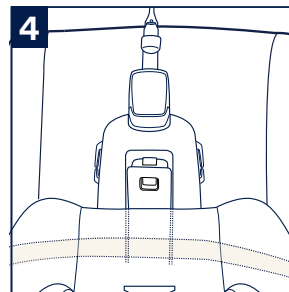
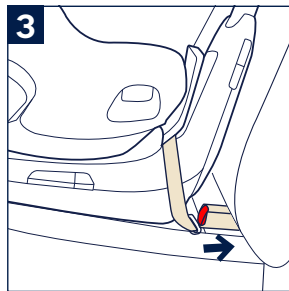
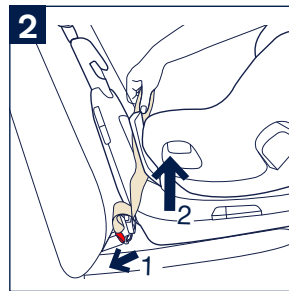
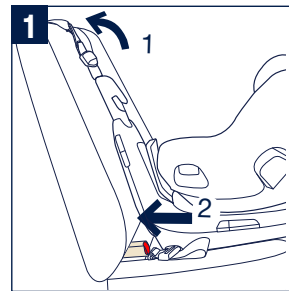


Lower Anchor Attachment

The lower anchor attachment is stored in the lower anchor storage at the back of the child restraint (p.36).

⚠ WARNING: Do not install by this method for a child weighing more than **30 lb (13.6 kg) rear facing** or **35 lb (15.9 kg) forward facing**.

- 1 - CHECK** that car seat is in rear facing position (p.40) and set to recline position 5 (p.34). Attach the tether hook loosely to the vehicle tether anchor (1) and open True Tension™ door (2).
- Attach one of the lower anchor connectors to the vehicle lower anchor (1) and route lower anchor attachment under True Tension™ door (2).
- Extend lower anchor connector as needed and attach other lower anchor connector to vehicle lower anchor.
- Check the lower anchor attachment, make sure it is not twisted and is laying flat across the rebound panel.
- While pushing down firmly on the car seat, pull up on the lower anchor attachment strap to remove all slack.
- Close the True Tension™ door (1). Tighten the tether by pulling on the tether adjustment strap (2).



Rear Facing Installation

Birth to 2+ years, 5–40 lb (2.3–18 kg), 18–43 in. (46–110 cm)

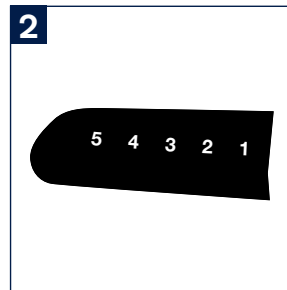
⚠ See pages 44-49 for complete installation instructions.

⚠ Use infant insert with infants 5–11 lb (2.3–5 kg) to improve the fit for smaller infants. **MUST** use SIP insert with crotch and harness pads up to 40 lb, 43 inches (18 kg, 110 cm). Remove crotch and harness pads when SIP insert is removed.



Rear Facing

5 lb (2.3 kg)	with vehicle belt & tether	40 lb (18 kg)
	with lower anchor belt & tether	30 lb (13.6 kg)



Rear Facing Setup

Follow installation instructions on pages 44-49.

- 1 - Rotate the seat rear facing. Push or pull on seat to make sure the seat is **LOCKED**.
- 2 - If tethered, select desired rear facing recline position 1-5 (p.35). Without tether, **ONLY** use rear facing recline position 1. Loosening the slack on tether from vehicle anchor or tether hook is helpful prior to adjusting recline. Tighten tether once recline adjustment is complete (p.38).

Check Installation

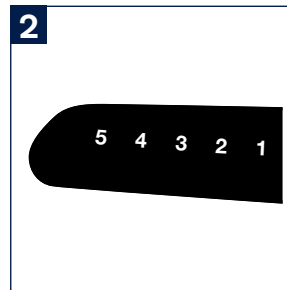
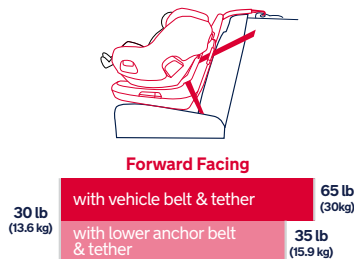
- Seat is in rear facing position.
- Tether is properly used and attached to vehicle tether anchor.
- Seat is securely installed. Hold seat at the belt path and move seat in all directions. Seat should move less than 1 inch.

Forward Facing Installation

At least 2 years old and 30 lb, 30–65 lb (13.6–30 kg),
34–49 in. (87–125 cm)

⚠ See pgs. 44-49 for complete installation instructions.

⚠ Remove crotch and harness pads when SIP insert is removed 40 lb (18 kg).



Forward Facing Setup

Follow installation instructions on pages 44-49.

- 1 - Rotate the seat forward facing. Push or pull on seat to make sure the seat is **LOCKED**.
- 2 - If tethered, select desired forward facing recline position 1-5 (p.35). Without tether, **ONLY** use **forward facing** recline position 1. Loosening the slack on tether from vehicle anchor or tether hook is helpful prior to adjusting recline. Tighten tether once recline adjustment is complete (p.38).

Check Installation

- Seat is in forward facing position.
- Tether is properly used and attached to vehicle tether anchor.
- Seat is securely installed. Hold seat just below the belt path and move seat in all directions. Seat should move less than 1 inch.

Securing Child

⚠ WARNING: If your child is not properly secured in the child restraint, they may be ejected in a crash, resulting in serious injury or death.

Complete harness function test on page 58 to ensure harness locks.

Loosen and unbuckle harness. Retain with magnetic buckle tongue holders (p.22).

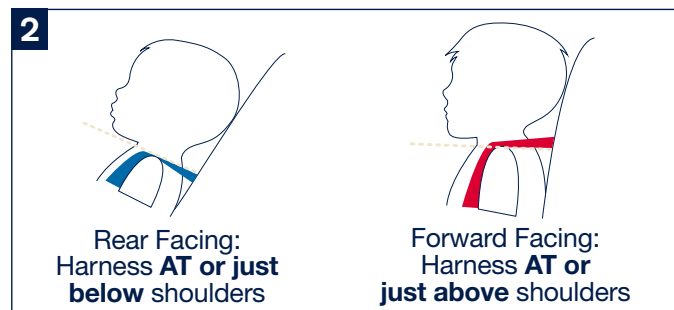
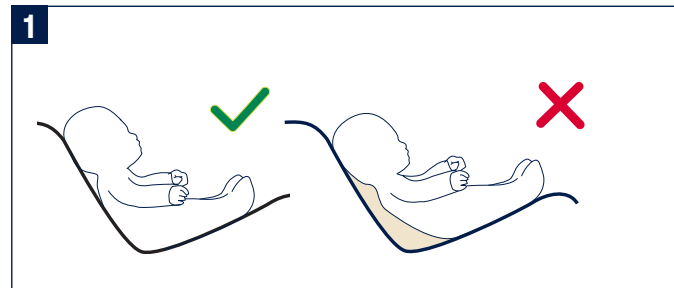
- 1 - Place child in child restraint with child's back flat against child restraint seat back. **DO NOT** allow child to slouch.

If child's head falls forward, recline the seat more.

- 2 - For **rear facing** use, adjust head support (p.35) to position harness **AT or just below** shoulders.

If infant's head falls forward, child restraint must be reclined more. Use infant insert with infants 5–11 lb (2.3–5 kg) to increase recline angle. **MUST** use SIP insert up to 40 lb, 43 inches (18 kg, 110 cm).

For **forward facing** use, adjust head support (p.35) to position harness **AT or just above** shoulders.



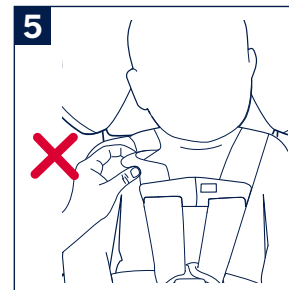
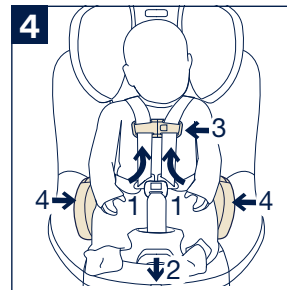
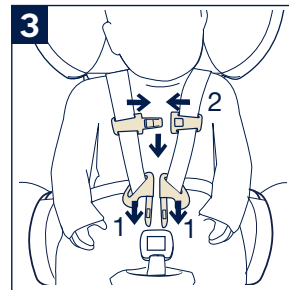
- 3 - Position harness over the child's shoulder and around child's waist and buckle harness (1). Fasten chest clip and slide down toward buckle (2).

Tip: keeping the chest clip down at the buckle makes harness adjustment easier.

- 4 - Slide excess strap from the child's waist up through the buckle towards the shoulders (1). Pull harness adjuster strap to remove slack in harness (2). Slide chest clip so it is level with child's armpit (3). If using SIP insert, make sure SIP insert sits at proper height between child's hips and sides of restraint not tucked behind child or down into seat. Gently press the SIP insert down and back into the seat, eliminating any gaps without compressing the seat pad (4).

- 5 - Repeat step 4 until harness is snug. When snug you should **NOT** be able to pinch a fold in the harness.

A snug strap should not allow any slack. It lies in a relatively straight line without sagging. It does not press on the child's flesh or push the child's body into an unnatural position.

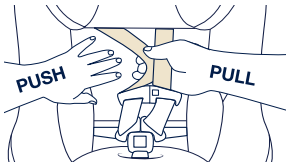


Cleaning and Maintenance

⚠ WARNING: Do not attempt to disassemble the child restraint. Only perform steps shown in this manual.

Clean Harness Adjuster

Harness Function Test
PUSH on back of seat and firmly **PULL** forward on the harness straps without pressing release button.

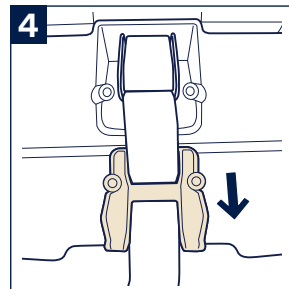
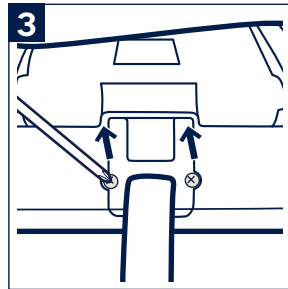
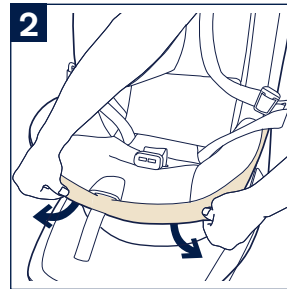
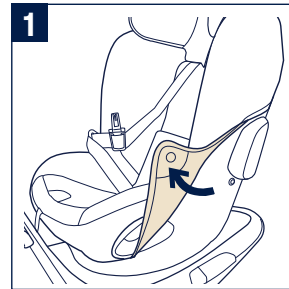


If harness remains tight, harness adjuster is functioning normally.

⚠ If harness loosens, follow Clean Harness Adjuster steps.

To Access Harness Adjuster

- 1 - Undo side snap button on the seat cover and guide the fabric opening around and off the car seat rotation handle: repeat for the other side.
- 2 - Pull seat pad off front of car seat shell.
- 3 - Remove the two Phillips head screws from the Harness Adjuster cover. **KEEP** screws for reinstall.
- 4 - Remove Harness Adjuster Cover and slide forward on harness till it is out of the way.



Clean Harness Adjuster (continued)

To Clean Harness Adjuster

- 1 - While pressing Harness Adjuster button, use the brush included in Care Instructions to brush/scrape the area and each tooth/groove down to where the harness and tooth/grooves meet. Use brush handle to remove stubborn debris.
- 2 - Pull Harness out slightly to help remove debris out of teeth area. Clean each tooth/groove carefully. The recline may need to be reduced to help pull debris away from the teeth.

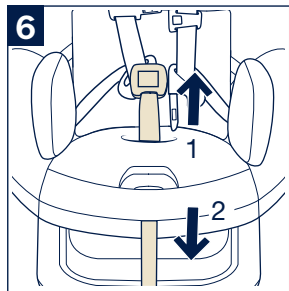
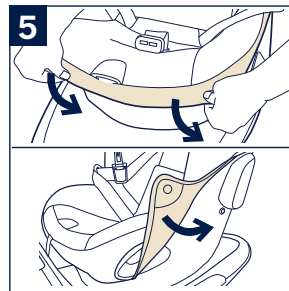
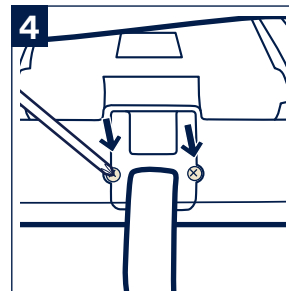
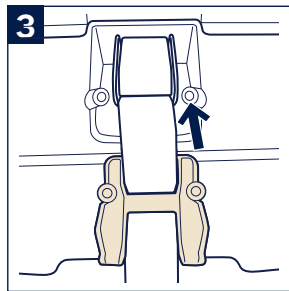
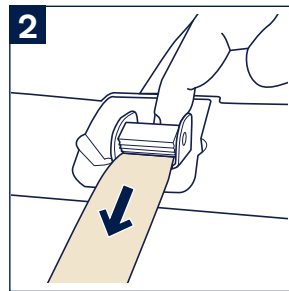
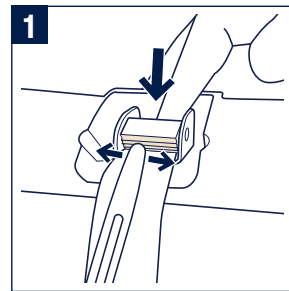


When fully cleaned, release locking mechanism and re-do **Harness Function Test (p.58)**.

Reassemble Harness Adjuster

- 3 - Slide Harness Adjuster Cover up harness and reattach Harness Adjuster Cover to the seat.
- 4 - Attach Harness Adjuster Cover with two previously removed Phillips head screws.
- 5 - Replace seat cover in seat.
- 6 - Pull buckle (1) through slot in seat cover and snap seat cover back to seat (2).

Repeat Harness Function Test (p.58) with fully assembled child restraint.



Cleaning and Maintenance (continued)

For detailed cleaning instructions reference Care Instruction Manual included with product.

Cleaning the Seat Cover, Harness Pads, SIP Insert, and Infant Insert

Seat cover, harness pads, and infant insert can be cleaned according to the instructions on the tag attached to the seat cover. Infant insert wedge should be spot cleaned only.

Cleaning the Harness

The child restraint harness system cannot be removed. **DO NOT attempt to remove the harness system.** When required, harness may be cleaned with a cloth and warm, soapy water.

Towel dry excess water and allow to air dry.

Cleaning the Shell

Shell may be cleaned with a damp cloth.

Towel dry.

DO NOT use abrasive cleansers on the shell.

Cleaning the Buckle

BUCKLE CANNOT BE REMOVED.

To clean buckle, wipe with damp cloth.

DO NOT use bleach or other harsh chemicals to clean any part of the seat.

DO NOT attempt to iron the covers or pads.

DO NOT attempt to lubricate the spin mechanism.

Nuna Baby Essentials, Inc. Nuna and all associated logos are trademarks.



Nuna Baby Essentials, Inc.

70 Thousand Oaks Blvd. | Morgantown, PA 19543

1.855.NUNA.USA | nunababy.com